



ENGLISH

KD-R862BT

CD RECEIVER

INSTRUCTION MANUAL

JVCKENWOOD Corporation

Please read all instructions carefully before operation to obtain the best possible performance from the unit.



B5A-0112-00 [U]

CONTENTS

BEFORE USE	2
BASICS	3
GETTING STARTED	4
CD / USB / iPod / ANDROID	5
RADIO	7
AUX	8
Pandora® (Applicable for Australia or New Zealand models only)	9
iHeartRadio® (Applicable for Australia or New Zealand models only)	10
BLUETOOTH®	11
AUDIO SETTINGS	17
DISPLAY SETTINGS	19
MORE INFORMATION	19
TROUBLESHOOTING	21
INSTALLATION / CONNECTION	24
SPECIFICATIONS	26

How to read this manual

- Operations are explained mainly using buttons on the faceplate.
- [XX] indicates the selected items.
- (→ XX) indicates references are available on the stated page.

BEFORE USE

▲ Warning

Do not operate any function that takes your attention away from safe driving.

▲ Caution

Volume setting:

- Adjust the volume so that you can hear sounds outside the car to prevent accidents.
- Lower the volume before playing digital sources to avoid damaging the speakers by the sudden increase of the output level.

General:

- Avoid using the external device if it might hinder safe driving.
- Make sure all important data has been backed up. We shall bear no responsibility for any loss of recorded data.
- Never put or leave any metallic objects (such as coins or metal tools) inside the unit, to prevent a short circuit.
- If a disc error occurs due to condensation on the laser lens, eject the disc and wait for the moisture to evaporate.
- USB rating is indicated on the main unit. To view, detach the faceplate. (→ 3)

Remote control (RM-RK52):

- Do not leave the remote control in hot places such as on the dashboard.
- The Lithium battery is in danger of explosion if replaced incorrectly. Replace it only with the same or equivalent type.
- The battery pack or batteries shall not be exposed to excessive heat such as sunshine, fire or the like.
- Keep the battery out of reach of children and in its original packaging when not in used. Dispose of used batteries promptly. If swallowed, contact a physician immediately.

Maintenance

Cleaning the unit: Wipe off dirt on the faceplate with a dry silicone or soft cloth.

Cleaning the connector: Detach the faceplate and clean the connector gently with a cotton swab, being careful not to damage the connector.

Handling discs:

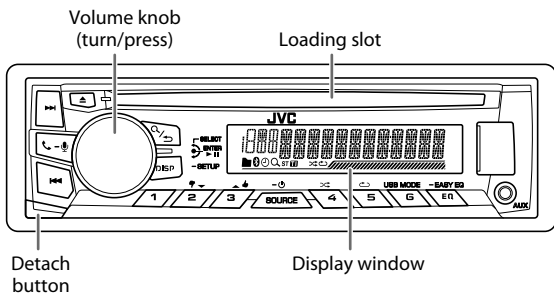
- Do not touch the recording surface of the disc.
- Do not stick tape etc. on the disc, or use a disc with tape stuck on it.
- Do not use any accessories for the disc.
- Clean from the center of the disc and move outward.
- Clean the disc with a dry silicone or soft cloth. Do not use any solvents.
- When removing discs from this unit, pull them out horizontally.
- Remove burrs from the center hole and disc edge before inserting a disc.



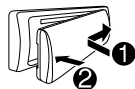
Connector (on the reverse side of the faceplate)

BASICS

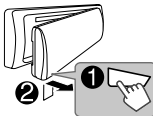
Faceplate



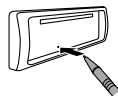
Attach



Detach



How to reset



Your preset adjustments will also be erased.

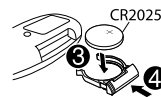
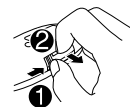
Remote control (RM-RK52)

Remote sensor (Do not expose to bright sunlight.)



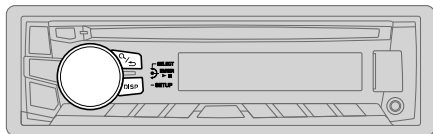
Pull out the insulation sheet when using for the first time.

How to replace the battery



To	On the faceplate	On the remote control
Turn on the power	Press SOURCE -. • Press and hold to turn off the power.	—
Adjust the volume	Turn the volume knob. Press the volume knob to mute the sound or pause playback. • Press again to cancel.	Press VOL + or VOL - . Press to mute the sound or pause playback. • Press again to cancel.
Select a source	• Press SOURCE - repeatedly. • Press SOURCE -, then turn the volume knob within 2 seconds.	Press SOURCE repeatedly.
Change the display information	Press DISP-SETUP repeatedly. (→ 21)	—

GETTING STARTED



1 Cancel the demonstration

- 1 Press and hold **DISP-SETUP**.
- 2 Turn the volume knob to select [DEMO], then press the knob.
- 3 Turn the volume knob to select [DEMO OFF], then press the knob.
- 4 Press **DISP-SETUP** to exit.

2 Set the clock

- 1 Press and hold **DISP-SETUP**.
- 2 Turn the volume knob to select [CLOCK], then press the knob.
- 3 Turn the volume knob to select [CLOCK SET], then press the knob.
- 4 Turn the volume knob to make the settings, then press the knob.
Day → Hour → Minute
- 5 Turn the volume knob to select [24H/12H], then press the knob.
- 6 Turn the volume knob to select [12 HOUR] or [24 HOUR], then press the knob.
- 7 Press **DISP-SETUP** to exit.

To return to the previous setting item, press \mathcal{Q} / \mathcal{D} .

3 Set the basic settings

- 1 Press and hold **DISP-SETUP**.
- 2 Turn the volume knob to make a selection (see the following table), then press the knob.
- 3 Repeat step 2 until the desired item is selected or activated.
- 4 Press **DISP-SETUP** to exit.

To return to the previous setting item, press \mathcal{Q} / \mathcal{D} .

Default: **XX**

SETTINGS

BEEP **ON**: Activates the keypress tone. ; **OFF**: Deactivates.

SRC SELECT

AM* **ON**: Enables AM in source selection. ; **OFF**: Disables.

SW1* **ON**: Enables SW1 in source selection. ; **OFF**: Disables.

SW2* **ON**: Enables SW2 in source selection. ; **OFF**: Disables.

PANDORA* **ON**: Enables PANDORA in source selection. ; **OFF**: Disables.

IHEART* **ON**: Enables IHEARTRADIO in source selection. ; **OFF**: Disables.

AUX* **ON**: Enables AUX in source selection. ; **OFF**: Disables.

F/W UPDATE

SYSTEM / BLUETOOTH

F/W xxxxx	YES : Starts upgrading the firmware. ; NO : Cancels (upgrading is not activated). For details on how to update the firmware, see: < http://www.jvc.net/cs/car/ >.
-----------	--

CLOCK

CLOCK SYNC **AUTO**: The clock time is automatically set using the Clock Time (CT) data in FM Radio Data System signal. ; **OFF**: Cancels.

CLOCK DISP **ON**: The clock time is shown on the display even when the unit is turned off. ; **OFF**: Cancels.

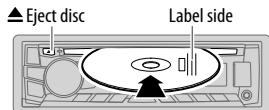
* Not displayed when the corresponding source is selected.

CD / USB / iPod / ANDROID

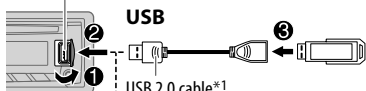
Start playback

The source changes automatically and playback starts.

CD



USB input terminal



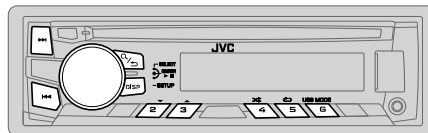
USB 2.0 cable*1
(commercially available)

iPod/iPhone

(Accessory of the iPod/
iPhone)*1

ANDROID*2

Micro USB 2.0 cable*1
(commercially available)



To	On the faceplate	On the remote control
Reverse / Fast-forward*3	Press and hold ◀◀ / ▶▶L	Press and hold ◀/▶.
Select a track/file	Press ◀◀ / ▶▶L	Press ◀/▶.
Select a folder*4	Press 3 ▲ / 2 ▼.	Press ▲ / ▼.
Repeat play*5	Press 5 ↺ repeatedly. TRACK RPT/ RPT OFF : Audio CD or JVC Playlist Creator (JPC) / JVC Music Control (JMC) file (→ 20) TRACK RPT/ FOLDER RPT/ RPT OFF : MP3/WMA/AAC/WAV file ONE RPT/ ALL RPT/ RPT OFF : iPod or ANDROID	
Random play*5	Press 4 ↻ repeatedly. ALL RND/ RND OFF : Audio CD FOLDER RND/ ALL RND/ RND OFF : MP3/WMA/AAC/WAV file or JPC / JMC file SONG RND/ ALL RND/ RND OFF : iPod or ANDROID	

*1 Do not leave the cable inside the car when not using.

*2 When connecting an Android device, "Press [VIEW] to install JVC MUSIC PLAY APP" is shown. Follow the instructions to install the application. You can also install the latest version of JVC MUSIC PLAY application on your Android device before connecting. (→ 20)

*3 For ANDROID: Applicable only when [AUTO MODE] is selected. (→ 6)

*4 For CD: Only for MP3/WMA/AAC files. This does not work for iPod/ ANDROID.

*5 For iPod/ ANDROID: Applicable only when [HEAD MODE]/ [AUTO MODE] is selected. (→ 6)

To	On the faceplate
Select control mode	<p>While in iPod source, press 6 USB MODE repeatedly.</p> <p>HEAD MODE: Control from the unit.</p> <p>IPHONE MODE: Control from the iPod/iPhone. However, you can still play/pause or file skip from the unit.</p> <p>While in ANDROID source, press 6 USB MODE repeatedly.</p> <p>AUTO MODE: Control from the unit (using JVC MUSIC PLAY application).</p> <p>AUDIO MODE: Control other media player applications from the Android device (without using JVC MUSIC PLAY application). However, you can still play/pause or file skip from the unit.</p>
Select music drive	<p>Press 6 USB MODE repeatedly.</p> <p>The stored songs in the following start playback.</p> <ul style="list-style-type: none"> Selected internal or external memory of a smartphone (Mass Storage Class). Selected drive of a multiple drives device.

Change the playback speed of the Audiobook

While listening to the iPod and [HEAD MODE] is selected (→ Select control mode)...

- Press and hold **DISP-SETUP**.
- Turn the volume knob to select [IPOD], then press the knob.
- Press the volume knob to select [AUDIOBOOKS].
- Turn the volume knob to make a selection, then press the knob.
 0.5× SPEED / 1× SPEED / 2× SPEED: Select the desired playback speed of the Audiobooks sound file in your iPod/iPhone.
 (Default: Depends on your iPod/iPhone setting.)
- Press **DISP-SETUP** to exit.

To return to the previous setting item, press **Q/↵**.

Select a file from a folder/list

- Press **Q/↵**.
- Turn the volume knob to select a folder/list, then press the knob.
- Turn the volume knob to select a file, then press the knob.

Quick Search

If you have many files, you can search through them quickly.

For MP3/WMA/AAC/WAV or JPC / JMC file:

Turn the volume knob quickly.

For iPod:

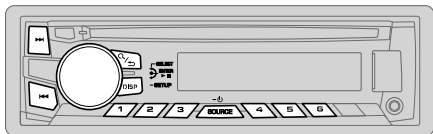
You can search for a file according to the first character.

Press **3 ▲ / 2 ▼** or turn the volume knob quickly to select the desired character (A to Z/ 0 to 9/ OTHERS).

- Select "OTHERS" if the first character is other than A to Z, 0 to 9.

- To return to the previous setting item, press **Q/↵**.
- To cancel, press and hold **Q/↵**.
- For iPod, applicable only when [HEAD MODE] is selected. (→ Select control mode)
- For ANDROID, applicable only when [AUTO MODE] is selected. (→ Select control mode)

RADIO



“ST” lights up when receiving an FM stereo broadcast with sufficient signal strength.

Search for a station

- 1 Press **SOURCE** repeatedly to select FM, AM, SW1 or SW2.
- 2 Press (or press on RM-RK52) to search for a station automatically. (or)
Press and hold (or press and hold on RM-RK52) until “M” flashes, then press repeatedly to search for a station manually.

Settings in memory

You can store up to 18 stations for FM and 6 stations for AM/SW1/SW2.

Store a station

While listening to a station....

Press and hold one of the number buttons (1 to 6).

(or)

- 1 Press and hold the volume knob until “PRESET MODE” flashes.
- 2 Turn the volume knob to select a preset number, then press the knob.
The preset number flashes and “MEMORY” appears.

Select a stored station

Press one of the number buttons (1 to 6).

(or)

- 1 Press .
- 2 Turn the volume knob to select a preset number, then press the knob to confirm.

Other settings

- 1 Press and hold **DISP-SETUP**.
- 2 Turn the volume knob to select [TUNER], then press the knob.
- 3 Turn the volume knob to make a selection (see the following table), then press the knob.
- 4 Repeat step 3 until the desired item is selected/activated or follow the instructions stated on the selected item.
- 5 Press **DISP-SETUP** to exit.

To return to the previous setting item, press .

Default: **XX**

RADIO TIMER	Turns on the radio at a specific time regardless of the current source. <ol style="list-style-type: none">1 ONCE / DAILY / WEEKLY / QFE: Select how often the timer will be turned on.2 FM / AM / SW1 / SW2: Select the FM, AM, SW1 or SW2 band.3 01 to 18 (for FM) / 01 to 06 (for AM/SW1/SW2): Select the preset station.4 Set the activation day*1 and time. “” lights up when complete. Radio Timer will not activate for the following cases.<ul style="list-style-type: none">• The unit is turned off.• [OFF] is selected for [AM/SW1/SW2] in [SRC SELECT] after Radio Timer for AM/SW1/SW2 is selected. (➔ 4)
SSM	SSM 01 – 06 / SSM 07 – 12 / SSM 13 – 18 : Automatically presets up to 18 stations for FM. “SSM” stops flashing when the first 6 stations are stored. Select SSM 07 – 12 / SSM 13 – 18 to store the following 12 stations.

*1 Selectable only when [ONCE] or [WEEKLY] is selected in step 1.

RADIO

Default: **XX**

LOCAL SEEK	ON: Searches only AM/SW1/SW2 stations with good reception. ; OFF: Cancels. • Settings made are applicable only to the selected source/station. Once you change the source/station, you need to make the settings again.
IF BAND	AUTO: Increases the tuner selectivity to reduce interference noises from adjacent FM stations. (Stereo effect may be lost.) ; WIDE: Subjects to interference noises from adjacent FM stations, but sound quality will not be degraded and the stereo effect will remain.
MONO	ON: Improves the FM reception, but the stereo effect will be lost. ; OFF: Cancels.
NEWS-STBY*2	ON: The unit will temporarily switch to News Programme if available. ; OFF: Cancels.
REGIONAL*2	ON: Switches to another station only in the specific region using the "AF" control. ; OFF: Cancels.
AF SET*2	ON: Automatically searches for another station broadcasting the same program in the same Radio Data System network with better reception when the current reception is poor. ; OFF: Cancels.
TI SET*2	ON: Allows the unit to temporarily switch to Traffic Information if available ("TI" lights up). ; OFF: Cancels.
PTY SEARCH*2	Select a PTY code (see below). If there is a station broadcasting a program of the same PTY code as you have selected, that station is tuned in.

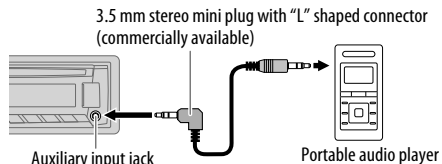
PTY code: **NEWS, AFFAIRS, INFO, SPORT, EDUCATE, DRAMA, CULTURE, SCIENCE, VARIED, POP M (music), ROCK M (music), EASY M (music), LIGHT M (music), CLASSICS, OTHER M (music), WEATHER, FINANCE, CHILDREN, SOCIAL, RELIGION, PHONE IN, TRAVEL, LEISURE, JAZZ, COUNTRY, NATION M (music), OLDIES, FOLK M (music), DOCUMENT**

*2 Only for FM source.

AUX

Use a portable audio player

1 Connect a portable audio player (commercially available).



2 Select **[ON]** for **[AUX]** in **[SRC SELECT]**. (→ 4)

3 Press **SOURCE** repeatedly to select **AUX**.

4 Turn on the portable audio player and start playback.



Use a 3-core plug head stereo mini plug for optimum audio output.

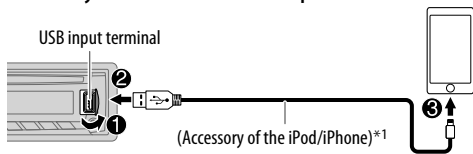
Preparation:

Install the latest version of the Pandora application on your device (iPhone/ iPod touch), then create an account and log in to Pandora.

- Select [ON] for [PANDORA] in [SRC SELECT]. (→ 4)

Start listening

- 1 Open the Pandora application on your device.
- 2 Connect your device to the USB input terminal.



The source changes to PANDORA and broadcast starts.

To	On the faceplate	On the remote control
Playback / pause	Press the volume knob.	Press
Skip a track	Press	Press
Thumbs up or thumbs down*2	Press /	Press /

*1 Do not leave the cable inside the car when not using.

*2 If thumbs down is selected, the current track is skipped.

Create and save a new station

- 1 Press / .
- 2 Turn the volume knob to select [NEW STATION], then press the knob.
- 3 Turn the volume knob to select [FROM TRACK] or [FROM ARTIST], then press the knob.

A new station is created based on the current song or artist.

- 4 Press and hold number button **1, 4, 5 or 6** to store.

To select a stored station, press number button **1, 4, 5 or 6**.

Search for a registered station

- 1 Press / .
- 2 Turn the volume knob to make a selection, then press the knob.
[BY DATE]: According to the registered date.
[A-Z]: Alphabetical order.
- 3 Turn the volume knob to the desired station, then press the knob.

To cancel, press and hold / .

Bookmark a song or artist information

- 1 Press and hold the volume knob.
- 2 Turn the volume knob to make a selection, then press the knob.
[THIS TRACK]: Current song information
[THIS ARTIST]: Current artist information
"BOOKMARKED" appears and the information is stored to your device.
The bookmark is available on your Pandora account but not on this unit.

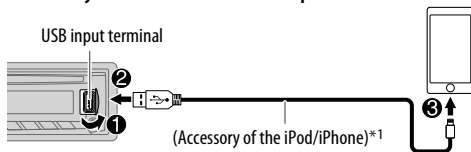
Preparation:

Install the latest version of iHeart Link for JVC application on your device (iPhone/ iPod touch), then create an account and log in to iHeartRadio.

- Select [ON] for [IHEART] in [SRC SELECT]. (→ 4)

Start listening

- 1 Open the iHeart Link application on your device.
- 2 Connect your device to the USB input terminal.



- 3 Press **SOURCE** \ominus repeatedly to select IHEARTRADIO.
Broadcast starts automatically

To	On the faceplate	On the remote control
Playback / pause	Press the volume knob.	Press \times .
Skip a track for custom station	Press \gg .	Press \blacktriangleright .
Thumbs up or thumbs down for custom station*2	Press 3 \blacktriangle / 2 \blacktriangledown .	Press \blacktriangle / \blacktriangledown .
Create a new/custom station	Press and hold the volume knob.	—
Add to favorite stations for live station	Press 1 .	—
Scan for live station	Press 4 .	—

*1 Do not leave the cable inside the car when not using.

*2 If thumbs down is selected, the current track is skipped.

Search for a station

- 1 Press \mathcal{Q} / \mathcal{S} .
- 2 Turn the volume knob to select a category, then press the knob.
- 3 Turn the volume knob to the desired station, then press the knob.

When a city list appears, you can skip cities in alphabetical order.

To cancel, press and hold \mathcal{Q} / \mathcal{S} .

Skip cities by alphabetical order

While a city list appears during search...

- 1 Turn the volume knob quickly to enter character search.
- 2 Turn the volume knob or press **3** \blacktriangle / **2** \blacktriangledown to select the character to be search for.
- 3 Press the volume knob to start searching.

To cancel, press and hold \mathcal{Q} / \mathcal{S} .

BLUETOOTH®

BLUETOOTH — Connection

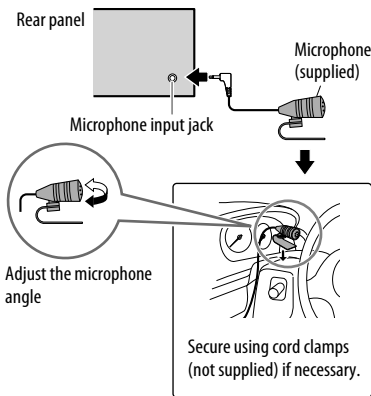
Supported Bluetooth profiles

- Hands-Free Profile (HFP)
- Serial Port Profile (SPP)
- Phonebook Access Profile (PBAP)
- Advanced Audio Distribution Profile (A2DP)
- Audio/Video Remote Control Profile (AVRCP)

Supported Bluetooth codecs

- Sub Band Codec (SBC)
- Advanced Audio Coding (AAC)

Connect the microphone



Pair a Bluetooth device

When connecting a Bluetooth device to the unit for the first time, perform pairing between the unit and the device.

- 1 Press **SOURCE**- to turn on the unit.
- 2 Search and select **"JVC UNIT"** on the Bluetooth device.
 - "BT PAIRING" flashes on the display.
 - For some Bluetooth devices, you may need to enter the Personal Identification Number (PIN) code immediately after searching.
 - Refer also to the manual supplied with your Bluetooth device.
- 3 Perform (A) or (B) depending on what scrolls on the display.

For some Bluetooth devices, pairing sequence may vary from the steps described below.

(A) "[Device Name]" → "XXXXXX" → "VOL - YES" → "BACK - NO"

"XXXXXX" is a 6-digit passkey randomly generated during each pairing.

- 1 Ensure that the passkey which appears on the unit and Bluetooth device is the same.
- 2 Press the volume knob to confirm the passkey.
- 3 Operate the Bluetooth device to confirm the passkey.

(B) "[Device Name]" → "VOL - YES" → "BACK - NO"

- 1 Press the volume knob to start pairing.
- 2 • If "PAIRING" → "PIN 0000" scrolls on the display, enter the PIN code "0000" into the Bluetooth device.

You can change to a desired PIN code before pairing. (→ 15)

- If only "PAIRING" appears, operate the Bluetooth device to confirm pairing.

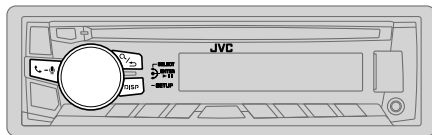
"PAIRING COMPLETED" appears when pairing is completed and will light up when the Bluetooth connection is established.

- Up to five devices can be registered (paired) in total.
- Only one Bluetooth device can be connected at any time.
- This unit supports Secure Simple Pairing (SSP).
- Some Bluetooth devices may not automatically connect to the unit after pairing. Connect the device to the unit manually. Refer to the instruction manual of the Bluetooth device for more information.
- Once the pairing is completed, the Bluetooth device will remain registered in the unit even if you reset the unit. To delete the paired device, → 15, [DELETE PAIR].
- When you connect iPhone/ iPod touch/ Android device to the USB input terminal, pairing request (via Bluetooth) is automatically activated. Press the volume knob to pair once you have confirmed the device name.

Automatic pairing request is activated only if:

- Bluetooth function of the connected device is turned on.
- [AUTO CNNT] is set to [ON]. (→ 15)
- JVC MUSIC PLAY application is installed on the Android device.

BLUETOOTH — Mobile phone



Receive a call

When there is an incoming call:

- All the buttons flash.
- The unit answers the call automatically if [AUTO ANSWER] is set to a selected time. (→ 13)

During a call:

- If you turn off the unit or detach the faceplate, the Bluetooth connection is disconnected.

To	On the faceplate	On the remote control
Answer a call	Press - or the volume knob.	Press / / / .
Reject a call	Press and hold - or the volume knob.	Press and hold / / / .
End a call	Press and hold - or the volume knob.	Press and hold / / / .
Adjust the phone volume [00] to [50] (Default: [15]*)	Turn the volume knob during a call. • This adjustment will not affect the volume of the other sources.	—
Switch between hands-free and private talk modes	Press the volume knob during a call. • Operations may vary according to the connected Bluetooth mobile phone.	—

* Not applicable for iPhone. During a call, the unit synchronizes the phone volume on the iPhone to the unit.

■ Improve the voice quality

While talking on the phone...

- 1 Press and hold **DISP-SETUP**.
- 2 Turn the volume knob to make a selection (see the following table), then press the knob.
- 3 Repeat step 2 until the desired item is selected or activated.
- 4 Press **DISP-SETUP** to exit.

To return to the previous setting item, press / .

Default: **XX**

MIC LEVEL	–10 — +10 (–4): The sensitivity of the microphone increases as the number increased.
NOISE RDCT	–5 — +5 (0): Adjust the noise reduction level until the least noise is being heard during a phone conversation.
ECHO CANCEL	–5 — +5 (0): Adjust the echo cancellation delay time until the least echo is being heard during a phone conversation.

BLUETOOTH®

Make the settings for receiving a call

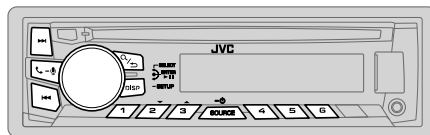
- 1 Press **📞** - **📞** to enter Bluetooth mode.
- 2 Turn the volume knob to make a selection (see the following table), then press the knob.
- 3 Repeat step 2 until the desired item is selected or activated.

To return to the previous setting item, press **📞** / **📞**.

Default: **XX**

SETTINGS

AUTO ANSWER	01 SEC — 30 SEC: The unit answers incoming call automatically in the selected time (in seconds). ; OFF: Cancels.
--------------------	---



Make a call

You can make a call from the call history, phonebook, or dialing the number. Call by voice is also possible if your mobile phone has the feature.

- 1 Press **📞** - **📞** to enter Bluetooth mode.
- 2 Turn the volume knob to make a selection (see the following table), then press the knob.
- 3 Repeat step 2 until the desired item is selected/activated or follow the instructions stated on the selected item.

To return to the previous setting item, press **📞** / **📞**.

- | | |
|--------------------|--|
| RECENT CALL | <ol style="list-style-type: none">1 Press the volume knob to select a name or a phone number.<ul style="list-style-type: none">• “>” indicates call received, “<” indicates call made, “M” indicates call missed.• “NO HISTORY” appears if there is no recorded call history or call number.2 Press the volume knob to call. |
|--------------------|--|

- | | |
|------------------|---|
| PHONEBOOK | <ol style="list-style-type: none">1 Press 3 ▲ / 2 ▼ to select the desired letter (A to Z, 0 to 9, and OTHERS).<ul style="list-style-type: none">• “OTHERS” appears if the first character is other than A to Z, 0 to 9.2 Turn the volume knob to select a name, then press the knob.3 Turn the volume knob to select a phone number, then press the knob to call.<ul style="list-style-type: none">• If the phone supports PBAP, the phonebook of the connected phone is automatically transferred to the unit when pairing.• This unit can display only non-accent letters. (Accent letters such as “Ú” is shown as “U”.) |
|------------------|---|

BLUETOOTH®

DIAL NUMBER	<ol style="list-style-type: none">1 Turn the volume knob to select a number (0 to 9) or character (*, #, +).2 Press ← / → to move the entry position. Repeat steps 1 and 2 until you finish entering the phone number.3 Press the volume knob to call.
VOICE	Speak the name of the contact you want to call or the voice command to control the phone functions. (→ Make a call using voice recognition)

Make a call using voice recognition

- 1 Press and hold **☎** - **📞** to activate the connected phone.
 - 2 Speak the name of the contact you want to call or the voice command to control the phone functions.
- Supported Voice Recognition features vary for each phone. Refer to the instruction manual of the connected phone for details.
 - This unit also supports the intelligent personal assistant function of iPhone.

Delete a contact

- 1 Press **☎** - **📞** to enter Bluetooth mode.
 - 2 Turn the volume knob to select [RECENT CALL], then press the knob.
 - 3 Turn the volume knob to select a contact.
 - 4 Press and hold **🗑** / **🗑** to enter delete mode.
 - 5 Turn the volume knob to select [DELETE] or [DELETE ALL], then press the knob.
DELETE: Selected name or phone number in step **3** is deleted.
DELETE ALL: All names or phone numbers in [RECENT CALL] in step **2** is deleted.
 - 6 Turn the volume knob to select [YES], then press the knob.
- To return to the previous setting item, press **🗑** / **🗑**.
 - Not applicable for mobile phone that supports PBAP.

Settings in memory

Store a contact in memory

You can store up to 6 contacts into the number buttons (**1** to **6**).

- 1 Press **☎** - **📞** to enter Bluetooth mode.
- 2 Turn the volume knob to select [RECENT CALL], [PHONEBOOK], or [DIAL NUMBER], then press the knob.
- 3 Turn the volume knob to select a contact or enter a phone number.
If a contact is selected, press the volume knob to show the phone number.
- 4 Press and hold one of the number buttons (**1** to **6**).
"MEMORY P(selected preset number)" appears when the contact is stored.

To erase a contact from the preset memory, select [DIAL NUMBER] in step **2** and store a blank number.

Make a call from memory

- 1 Press **☎** - **📞** to enter Bluetooth mode.
- 2 Press one of the number buttons (**1** to **6**).
- 3 Press the volume knob to call.
"NO PRESET" appears if there is no contacts stored.

Bluetooth mode settings

- 1 Press and hold **DISP-SETUP**.
- 2 Turn the volume knob to select [BLUETOOTH], then press the knob.
- 3 Turn the volume knob to make a selection (→ **15**), then press the knob.
- 4 Repeat step **3** until the desired item is selected/activated or follow the instructions stated on the selected item.
- 5 Press **DISP-SETUP** to exit.

To return to the previous setting item, press **🗑** / **🗑**.

Default: XX

PHONE*1	Selects the phone or audio device to connect or disconnect. “*” appears in front of the device name when connected.
AUDIO*1	
APPLICATION*1	Shows the connected phone name using the JVC Smart Music Control*2 app. “*” appears in front of the device name when connected.
DELETE PAIR	<ol style="list-style-type: none"> 1 Turn the volume knob to select a device to delete, then press the knob. 2 Turn the volume knob to select [YES] or [NO], then press the knob.
SET PINCODE (0000)	<p>Changes the PIN code (up to 6 digits).</p> <ol style="list-style-type: none"> 1 Turn the volume knob to select a number. 2 Press ◀▶ to move the entry position. Repeat steps 1 and 2 until you finish entering the PIN code. 3 Press the volume knob to confirm.
AUTO CNCT	ON: The unit automatically reconnect when the last connected Bluetooth device is within range. ; OFF: Cancels.
AUTO PAIR	ON: The unit automatically pair supported Bluetooth device (iPhone/iPod touch/ Android device) when it is connected through USB input terminal. Depending on the operating system of the connected device, this function may not work. ; OFF: Cancels.
INITIALIZE	YES: Initializes all the Bluetooth settings (including stored pairing, phonebook, and etc.). ; NO: Cancels.
INFORMATION	MY BT NAME: Displays the unit name (JVC UNIT). ; MY ADDRESS: Shows address of this unit.

1 You can only connect another Bluetooth device by disconnecting the connected Bluetooth device first. “” disappears when disconnected.

*2 JVC Smart Music Control is designed to view JVC car receiver status and perform simple control operations on Android smart phones.
For JVC Smart Music Control operations, visit JVC website: <<http://www.jvc.net/cs/car/>>.

Bluetooth compatibility check mode

You can check the connectivity of the supported profile between the Bluetooth device and the unit.

- Make sure there is no Bluetooth device paired.

- 1 **Press and hold** .
“BLUETOOTH” ↔ “CHECK MODE” appears. “SEARCH NOW USING PHONE” → “PIN IS 0000” scrolls on the display.
- 2 **Search and select “JVC UNIT” on the Bluetooth device within 3 minutes.**
- 3 **Perform (A), (B) or (C) depending on what appears on the display.**
(A) “PAIRING” → “XXXXXX” (6-digit passkey): Ensure that the same passkey appears on the unit and Bluetooth device, then operate the Bluetooth device to confirm the passkey.
(B) “PAIRING” → “PIN IS 0000”: Enter “0000” on the Bluetooth device.
(C) “PAIRING”: Operate the Bluetooth device to confirm pairing.

After pairing is successful, “PAIRING OK” → “[Device Name]” appears and Bluetooth compatibility check starts.

If “CONNECT NOW USING PHONE” appears, operate the Bluetooth device to allow phonebook access to continue.

The connectivity result flashes on the display.

“PAIRING OK” and/or “H.FREE OK”*1 and/or “A.STREAM OK”*2 and/or “PBAP OK”*3 : Compatible

*1 Compatible with Hands-Free Profile (HFP)

*2 Compatible with Advanced Audio Distribution Profile (A2DP)

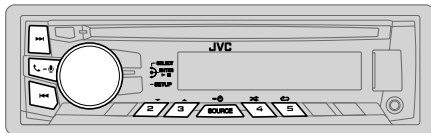
*3 Compatible with Phonebook Access profile (PBAP)

After 30 seconds, “PAIRING DELETED” appears to indicate that pairing has been deleted, and the unit exits check mode.

- To cancel, press and hold **SOURCE**- to turn off the power, then turn on the power again.

BLUETOOTH®

BLUETOOTH — Audio



Audio player via Bluetooth

- 1 Press **SOURCE**- repeatedly to select BT AUDIO (or press **SOURCE** on RM-RK52).
- 2 Operate the Bluetooth audio player to start playback.

To	On the faceplate	On the remote control
Playback / pause	Press / .	Press .
Select group or folder	Press 3 / 2 .	Press / .
Reverse / Forward skip	Press / .	Press / .
Reverse / Fast-forward	Press and hold / .	Press and hold / .
Repeat play	Press 5 repeatedly. TRACK RPT, ALL RPT, RPT OFF	—
Random play	Press 4 repeatedly. GROUP RND, ALL RND, RND OFF	—

Operations and display indications may differ according to their availability on the connected device.

Internet radio via Bluetooth

Listen to Pandora

Preparation:

Select [ON] for [PANDORA] in [SRC SELECT]. (→ 4)

You can listen to Pandora on your smart phone (Android OS) through Bluetooth on this unit.

- 1 Open the Pandora application on your device.
- 2 Connect your Bluetooth audio player via Bluetooth connection. (→ 11)
- 3 Press **SOURCE**- repeatedly to select PANDORA. The source switches and broadcast starts automatically.

You can operate Pandora in the same way as Pandora for iPod/iPhone. (→ 9)

Listen to iHeartRadio

Preparation:

Select [ON] for [IHEART] in [SRC SELECT]. (→ 4)

You can listen to iHeartRadio on your smart phone (Android OS) through Bluetooth on this unit.

- 1 Open the iHeart Link application on your smart phone.
- 2 Connect your smart phone via Bluetooth connection. (→ 11)
- 3 Press **SOURCE**- repeatedly to select IHEARTRADIO.

The source switches and broadcast starts automatically.

You can operate iHeartRadio in the same way as iHeartRadio for iPod/iPhone. (→ 10)

AUDIO SETTINGS

To	On the faceplate
Select a preset equalizer	<p>Press EQ-EASY EQ repeatedly.</p> <p>Press EQ-EASY EQ, then turn the volume knob within 2 seconds.</p> <p>Preset equalizer: FLAT (default), HARD ROCK, JAZZ, POP, R&B, TALK, USER1, USER2, VOCAL BOOST, BASS BOOST, CLASSICAL, DANCE</p>
Store your own sound settings	<ol style="list-style-type: none"> 1 Press and hold EQ-EASY EQ. 2 Turn the volume knob to select [EASY EQ], then press the knob. 3 Turn the volume knob to select [USER1] or [USER2], then press the knob. 4 Turn the volume knob to make a selection, then press the knob. For settings, refer to step 2 of [EASY EQ]. <ul style="list-style-type: none"> • To return to the previous setting item, press Q / ↵. • To exit, press EQ-EASY EQ.

Other settings

- 1 Press and hold **DISP-SETUP**.
- 2 Turn the volume knob to make a selection (see the following table), then press the knob.
- 3 Repeat step 2 until the desired item is selected/activated or follow the instructions stated on the selected item.
- 4 Press **DISP-SETUP** to exit.

To return to the previous setting item, press **Q** / **↵**.

Default: **XX**

EQ SETTING

EQ PRESET **FLAT** / **HARD ROCK** / **JAZZ** / **POP** / **R&B** / **TALK** / **USER1** / **USER2** / **VOCAL BOOST** / **BASS BOOST** / **CLASSICAL** / **DANCE**: Selects a preset equalizer.

EASY EQ

- 1 **USER1** / **USER2**: Select a preset name.
- 2 Adjust your own sound settings.

SUB.W SP *1*2:	00 to +06	(Default: 03)
SUB.W *1*3:	-08 to +08	00
BASS LVL :	-06 to +06	00
MID LVL :	-06 to +06	00
TRE LVL :	-06 to +06	00

PRO EQ

- 1 **USER1** / **USER2**: Select a preset name.
- 2 **BASS** / **MIDDLE** / **TREBLE**: Select a sound tone.
- 3 Adjust the sound elements of the selected sound tone.

BASS	Frequency: 60 / 80 / 100 / 200 HZ	(Default: 80 HZ)
Level:	-06 to +06	00
Q:	Q1.0 / Q1.25 / Q1.5 / Q2.0	Q1.0
MIDDLE	Frequency: 0.5 / 1.0 / 1.5 / 2.5 KHZ	(Default: 1.0 KHZ)
Level:	-06 to +06	00
Q:	Q0.75 / Q1.0 / Q1.25	Q1.25
TREBLE	Frequency: 10.0 / 12.5 / 15.0 / 17.5 KHZ	(Default: 10.0 KHZ)
Level:	-06 to +06	00
Q:	Q FIX	Q FIX

*1 Displayed only when [SUB.W] is set to [ON]. (↔ 18)

*2 Displayed only when [SPK/PRE OUT] is set to [SUB.W/SUB.W]. (↔ 18)

*3 Displayed only when [SPK/PRE OUT] is set to [REAR/SUB.W] or [SUB.W/SUB.W]. (↔ 18)

AUDIO SETTINGS

AUDIO	
BASS BOOST	+01 / +02: Selects your preferred bass boost level. ; OFF: Cancels.
LOUD	01 / 02: Boosts low or high frequencies to produce a well-balanced sound at low volume. ; OFF: Cancels.
SUB.W LEVEL*4	SPK-OUT*5 00 to +06 (+03): Adjusts the output level of the subwoofer connected via speaker lead. (➔ 25) PRE-OUT*6 −08 to +08 (00): Adjusts the output level of the subwoofer connected to the lineout terminals (REAR/SW) through an external amplifier. (➔ 25)
SUB.W*6	ON / OFF: Turns on or off the subwoofer output.
SUB.W LPF*4	THROUGH: All signals are sent to the subwoofer. ; LOW 55HZ / MID 85HZ / HIGH 120HZ: Audio signals with frequencies lower than 55 Hz/ 85 Hz/ 120 Hz are sent to the subwoofer.
SUB.W PHASE*4	REVERSE (180°) / NORMAL (0°): Selects the phase of the subwoofer output to be in line with the speaker output for optimum performance. (Selectable only if a setting other than [THROUGH] is selected for [SUB.W LPF].)
FADER	R06 — F06 (00): Adjusts the front and rear speaker output balance.
BALANCE*7	L06 — R06 (00): Adjusts the left and right speaker output balance.
VOL ADJUST	−05 — +05 (00): Presets the volume adjustment level of each source (compared to the FM volume level). Before adjustment, select the source you want to adjust. (“VOL ADJ FIX” appears if FM is selected.)
AMP GAIN	LOW POWER: Limits the maximum volume level to 30. (Select if the maximum power of each speaker is less than 50 W to prevent damaging the speakers.) ; HIGH POWER: The maximum volume level is 50.
D.T.EXP (Digital Track Expander)	ON: Creates realistic sound by compensating the high-frequency components and restoring the rise-time of the waveform that are lost in audio data compression. ; OFF: Cancels.

SPK/PRE OUT Selects the appropriate setting to get the desired output. (See the following table.)

*4 Displayed only when [SUB.W] is set to [ON].

*5 Displayed only when [SPK/PRE OUT] is set to [SUB.W/SUB.W].

*6 Displayed only when [SPK/PRE OUT] is set to [REAR/SUB.W] or [SUB.W/SUB.W].

*7 This adjustment will not affect the subwoofer output.

SPK/PRE OUT

 **Connection via lineout terminals (➔ 25)**

Setting	Lineout terminal	
	FRONT	REAR/SW
REAR/REAR	Front speakers output	Rear speakers output
REAR/SUB.W	Front speakers output	Subwoofer output
SUB.W/SUB.W	Front speakers output	Subwoofer output

 **Connection via speaker leads (➔ 25)**

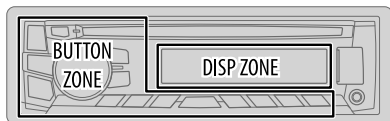
Setting	Rear speaker lead	
	L (left)	R (right)
REAR/REAR	Rear speakers output	Rear speakers output
REAR/SUB.W	Rear speakers output	Rear speakers output
SUB.W/SUB.W	Subwoofer output	(Mute)

If [SUB.W/SUB.W] is selected:

– [HIGH 120HZ] is selected in [SUB.W LPF] and [THROUGH] is not available.

– [R01] is selected in [FADER] and selectable range is [R06] to [00]

DISPLAY SETTINGS



- 1 Press and hold **DISP-SETUP**.
- 2 Turn the volume knob to make a selection (see the following table), then press the knob.
- 3 Repeat step 2 until the desired item is selected/activated or follow the instructions stated on the selected item.
- 4 Press **DISP-SETUP** to exit.

To return to the previous setting item, press **Q** / **↩**.

Default: **XX**

DISPLAY	
DIMMER	Selects the display and button illumination adjusted in the [BRIGHTNESS] setting. OFF: Selects the day adjustments. ; ON: Selects the night adjustments. ; DIMMER TIME: Adjusts the dimmer on and off time. Turn the volume knob to adjust the [ON] time, then press the knob. Turn the volume knob to adjust the [OFF] time, then press the knob. (Default: [ON]: 18:00 or 6:00 PM [OFF]: 6:00 or 6:00 AM) AUTO: Changes between the day and night adjustments when you turn off on the car headlights.*1
BRIGHTNESS	Sets the button and display brightness for day and night separately. 1 DAY / NIGHT: Select day or night. 2 Select a zone for setting. (➔ Illustration above) 3 Set the brightness level (00 to 31). (Default: DAY: 31 ; NIGHT: 15)
SCROLL *2	ONCE: Scrolls the display information once. ; AUTO: Repeats scrolling at 5-second intervals. ; OFF: Cancels.

*1 The illumination control wire connection is required. (➔ 25)

*2 Some characters or symbols will not be shown correctly (or will be blanked).

MORE INFORMATION

About discs and audio files

• This unit can only play the following CDs:



- This unit can play back multi-session discs; however, unclosed sessions will be skipped during playback.
- **Unplayable discs:**
 - Discs that are not round.
 - Discs with coloring on the recording surface or discs that are dirty.
 - Recordable/ReWritable discs that have not been finalized.
 - 8 cm CD. Attempting to insert using an adapter may cause malfunction.
- **DualDisc playback:** The Non-DVD side of a "DualDisc" does not comply with the "Compact Disc Digital Audio" standard. Therefore, the use of Non-DVD side of a DualDisc on this product cannot be recommended.
- **Playable files:**
 - File extensions: MP3 (.mp3), WMA (.wma), AAC (.m4a)
 - Bit rate: MP3: 8 kbps — 320 kbps
WMA: 32 kbps — 192 kbps
AAC: 8 kbps — 320 kbps
 - Sampling frequency:
MP3: 48 kHz, 44.1 kHz, 32 kHz, 24 kHz, 22.05 kHz, 16 kHz, 12 kHz, 11.025 kHz, 8 kHz
WMA: 8 kHz — 48 kHz
AAC: 8 kHz — 48 kHz
 - Variable bit rate (VBR) files.
- **Maximum number of characters for file/folder name:**
It depends on the disc format used (includes 4 extension characters—<.mp3>, <.wma> or <.m4a>).
 - ISO 9660 Level 1 and 2: 32 characters
 - Romeo: 32 characters
 - Joliet: 32 characters
 - Windows long file name: 32 characters

MORE INFORMATION

About USB devices

- This unit can play MP3/WMA/AAC/WAV files stored on a USB mass storage class device.
- You cannot connect a USB device via a USB hub.
- Connecting a cable whose total length is longer than 5 m may result in abnormal playback.
- The maximum number of characters for:
 - Folder names: 64 characters
 - File names: 64 characters
 - MP3 Tag: 64 characters
 - WMA Tag: 64 characters
 - AAC Tag: 64 characters
 - WAV Tag: 64 characters
- This unit can recognize a total of 20 480 files, 999 folders (999 files per folder including folder without unsupported files), and of 8 hierarchies.
- This unit cannot recognize a USB device whose rating is other than 5 V and exceeds 1 A.

About iPod/iPhone

Made for

- iPod touch (2nd, 3rd, 4th, and 5th generation)
- iPod classic
- iPod nano (3rd, 4th, 5th, 6th, and 7th generation)
- iPhone 3G, 3GS, 4, 4S, 5, 5S, 5C
- It is not possible to browse video files on the “Videos” menu in [HEAD MODE].
- The song order displayed on the selection menu of this unit may differ from that of the iPod/iPhone.
- If some operations are not performed correctly or as intended, visit:
<<http://www.jvc.net/cs/car/>>.

About Android device

- This unit supports Android OS 4.1 and above.
- Some Android devices (with OS 4.1 and above) may not fully support Android Open Accessory (AOA) 2.0.
- If the Android device supports both mass storage class device and AOA 2.0, this unit always playback via AOA 2.0 as priority.
- For more information and the latest compatible list, see: <<http://www.jvc.net/cs/car/>>.

About Pandora

- Pandora is available only in the U.S., Australia and New Zealand.
- Because Pandora is a third-party service, the specifications are subject to change without prior notice. Accordingly, compatibility may be impaired, or some or all of the services may become unavailable.
- Some functions of Pandora cannot be operated from this unit.
- For issues using the application, please contact Pandora at pandora-support@pandora.com.

About iHeartRadio

- iHeartRadio® is available only in the U.S., Australia and New Zealand.
- iHeartRadio® is a third-party service, therefore the specifications are subject to change without prior notice. Accordingly, compatibility may be impaired or some or all of the services may become unavailable.
- Some functions of iHeartRadio® cannot be operated from this unit.

About Bluetooth

- Depending on the Bluetooth version of the device, some Bluetooth devices may not be able to connect to this unit.
- This unit may not work with some Bluetooth devices.
- Signal conditions vary, depending on the surroundings.
- For more information about Bluetooth, visit the following JVC website:
<<http://www.jvc.net/cs/car/>>.

About JVC Playlist Creator and JVC Music Control

- This unit supports the PC application JVC Playlist Creator and Android™ application JVC Music Control.
- When you play audio file with song data added using the JVC Playlist Creator or JVC Music Control, you can search for audio file by Genres, Artists, Albums, Playlists, and Songs.
- JVC Playlist Creator and JVC Music Control are available from the following web site:
<<http://www.jvc.net/cs/car/>>.



MORE INFORMATION

Change the display information

Press **DISP-SETUP** repeatedly.

FM/AM/SW1/ SW2	Station name (PS)*1 → Frequency → Program type (PTY)*1*2 → Title*1*2 → Day/Clock → (back to the beginning) *1 For FM Radio Data System stations only. *2 If unavailable, "NO PTY" / "NO TEXT" appears.
CD or USB	Playing time → Day/Clock → Disc name*3 → Album title/Artist*4 → Track title*5 → Folder/file name*6 → (back to the beginning) *3 Only for CD-DA: If not recorded, "NO NAME" appears. *4 Only for MP3/WMA/AAC/WAV files: If not recorded, "NO NAME" appears. *5 If not recorded, "NO NAME" appears. *6 Only for MP3/WMA/AAC/WAV files.
USB-IPOD/ USB-ANDROID	Playing time → Day/Clock → Album title/Artist*7 → Track title*7 → (back to the beginning) *7 If not recorded, "NO NAME" appears.
PANDORA	Station name → Album title/Artist → Track title → Playing time → Day/Clock → (back to the beginning)
IHEART	Station name → Track title*8 → Track Artist*8 → Day/Clock → (back to the beginning) *8 If unavailable, station name appears.
AUX	AUX ↔ Day/Clock
BT AUDIO	Playing time → Day/Clock → Album title/Artist*9 → Track title*9 → (back to the beginning) *9 If not recorded, "UNKNOWN" appears.

TROUBLESHOOTING

	Symptom	Remedy
General	Sound cannot be heard.	<ul style="list-style-type: none"> Adjust the volume to the optimum level. Check the cords and connections.
	"MISWIRING CHECK WIRING THEN PWR ON" appears.	Turn the power off, then check to be sure the terminals of the speaker wires are insulated properly. Turn the power on again.
	"PROTECTING SEND SERVICE" appears.	Send the unit to the nearest service center.
Radio	Source cannot be selected.	Check the [SRC SELECT] setting. (→ 4)
	<ul style="list-style-type: none"> Radio reception is poor. Static noise while listening to the radio. 	<ul style="list-style-type: none"> Connect the antenna firmly. Pull the antenna out all the way.
	Disc cannot be ejected.	Press and hold  to forcibly eject the disc. Be careful not to drop the disc when it is ejected.
CD / USB / iPod	"IN DISC" appears.	Make sure nothing is blocking the loading slot when you eject the disc.
	"PLEASE" and "EJECT" appear alternately.	Press  , then insert the disc correctly.
	Playback order is not as intended.	The playback order is determined by the file name (USB) or the order in which files were recorded (disc).
	Elapsed playing time is not correct.	This depends on the recording process earlier.
	"NOT SUPPORT" appears and track skips.	Check whether the track is a playable format. (→ 19)
	"READING" keeps flashing.	<ul style="list-style-type: none"> Do not use too many hierarchical levels and folders. Reload the disc or reattach the USB device.
	"CANNOT PLAY" flashes and/or connected device cannot be detected.	<ul style="list-style-type: none"> Check whether the connected device is compatible with this unit and ensure the files are in supported formats. (→ 19) Reattach the device.

TROUBLESHOOTING

	Symptom	Remedy
CD / USB / iPod	The iPod/iPhone does not turn on or does not work.	<ul style="list-style-type: none"> Check the connection between this unit and iPod/iPhone. Detach and reset the iPod/iPhone using hard reset.
	Correct characters are not displayed.	This unit can only display uppercase letters, numbers, and a limited number of symbols.
ANDROID	<ul style="list-style-type: none"> Sound cannot be heard during playback. Sound output only from the Android device. 	<ul style="list-style-type: none"> Reconnect the Android device. If in [AUDIO MODE], launch any media player application on the Android device and start playback. If in [AUDIO MODE], relaunch the current media player application or use another media player application. Restart the Android device. If this does not solve the problem, the connected Android device is unable to route the audio signal to unit. (➔ 20)
	Cannot playback at [AUTO MODE].	<ul style="list-style-type: none"> Make sure JVC MUSIC PLAY APP is installed on the Android device. (➔ 5) Reconnect the Android device and select the appropriate control mode. (➔ 6) If this does not solve the problem, the connected Android device does not support [AUTO MODE]. (➔ 20)
	"NO DEVICE" or "READING" keeps flashing.	<ul style="list-style-type: none"> Switch off the developer options on the Android device. Reconnect the Android device. If this does not solve the problem, the connected Android device does not support [AUTO MODE]. (➔ 20)
	Playback is intermittent or sound skips.	Turn off the power saving mode on the Android device.
	"CANNOT PLAY"	<ul style="list-style-type: none"> Make sure Android device contains playable audio files. Reconnect the Android device. Restart the Android device.

	Symptom	Remedy
Pandora	"ADD ERROR" "SEARCH ERR"	New station creation is unsuccessful.
	"CHK DEVICE"	Check the Pandora application on your device.
	"NO SKIPS"	The skip limit has been reached.
	"NO STATIONS"	No stations are found.
	"STATION LMT"	The number of registered stations has reached its limit. Retry after deleting unnecessary stations from your device.
	"UPGRADE APP"	Make sure you have installed the latest version of the Pandora application on your device.
iHeartRadio	"CONNECT ERR"	Communication is unstable.
	"RATING ERR"	Registration of thumbs up/thumbs down has failed.
	"LICENSE ERR"	You try to access from a country which Pandora is not deliverable.
	Station cannot be selected.	If "Explicit Content" in [Account Settings] is checked in the web version of iHeartRADIO, custom stations become unavailable.
	"CREATE ERR"	Custom station name creation is unsuccessful.
	"SAVE ERROR"	Addition to the favorite category failed.
	"DISCONNECTED"	Check the connection to the device.
	"NO SKIPS"	The skip limit has been reached. Retry later.
	"NO STATIONS"	No stations are found.
	"NOT CONNCTD"	Link to the application is impossible.

TROUBLESHOOTING

	Symptom	Remedy
iHeartRadio	"UPDATE APP"	Make sure you have installed the latest version of the iHeart Link for JVC application on your device.
	"PLS LOGIN"	You haven't log in. Log in again.
	"STATION NOT AVAILABLE"	Broadcast from the station is over.
	"STATION NOT SELECTED"	No station is selected.
	"STREAM ERR"	Broadcast data is interrupted.
	"THUMBS ERR"	Registration of Thumbs Up/Down has failed.
Bluetooth®	"TIMED OUT"	The request has resulted in time-out.
	No Bluetooth device is detected.	<ul style="list-style-type: none"> • Search from the Bluetooth device again. • Reset the unit. (➔ 3)
	Pairing cannot be made.	<ul style="list-style-type: none"> • Make sure you have entered the same PIN code to both the unit and Bluetooth device. • Delete pairing information from both the unit and the Bluetooth device, then perform pairing again. (➔ 11)
	Echo or noise occurs.	<ul style="list-style-type: none"> • Adjust the microphone unit's position. (➔ 11) • Check the [ECHO CANCEL] setting. (➔ 12)
	Phone sound quality is poor.	<ul style="list-style-type: none"> • Reduce the distance between the unit and the Bluetooth device. • Move the car to a place where you can get a better signal reception.
	Sound is being interrupted or skipped during playback of a Bluetooth audio player.	<ul style="list-style-type: none"> • Reduce the distance between the unit and the Bluetooth audio player. • Turn off, then turn on the unit and try to connect again. • Other Bluetooth devices might be trying to connect to the unit.

	Symptom	Remedy
Bluetooth®	The connected Bluetooth audio player cannot be controlled.	<ul style="list-style-type: none"> • Check whether the connected Bluetooth audio player supports Audio/Video Remote Control Profile (AVRCP). (Refer to the instructions of your audio player.) • Disconnect and connect the Bluetooth player again.
	"PAIRING FULL"	The number of registered devices has reached its limit. Retry after deleting an unnecessary device. (➔ 15, DELETE PAIR)
	"PLEASE WAIT"	The unit is preparing to use the Bluetooth function. If the message does not disappear, turn off and turn on the unit, then connect the device again.
	"BT DEVICE NOT FOUND"	The unit failed to search for the registered Bluetooth devices during [AUTO CNNECT]. Turn on Bluetooth from your device and connect manually. (➔ 15)
	"NOT SUPPORT"	The connected phone does not support Voice Recognition feature.
	"ERROR"	Try the operation again. If "ERROR" appears again, check if the device supports the function you have tried.
	"H/W ERROR"	Reset the unit and try the operation again. If "H/W ERROR" appears again, consult your nearest service center.
	"BT ERROR PLS UPDATE"	Update the Bluetooth firmware. (➔ 4)

If you still have troubles, reset the unit. (➔ 3)

▲ Warning

- The unit can only be used with a 12 V DC power supply, negative ground.
- Disconnect the battery's negative terminal before wiring and mounting.
- Do not connect Battery wire (yellow) and Ignition wire (red) to the car chassis or Ground wire (black) to prevent a short circuit.
- Insulate unconnected wires with vinyl tape to prevent a short circuit.
- Be sure to ground this unit to the car's chassis again after installation.

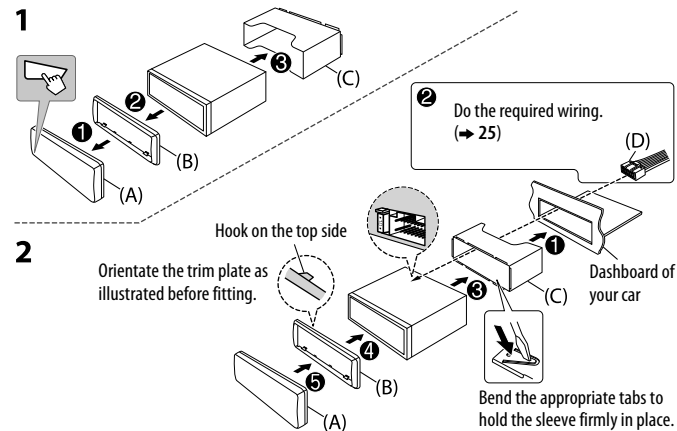
▲ Caution

- For safety's sake, leave wiring and mounting to professionals. Consult the car audio dealer.
- Install this unit in the console of your vehicle. Do not touch the metal parts of this unit during and shortly after use of the unit. Metal parts such as the heat sink and enclosure become hot.
- Do not connect the \ominus wires of speakers to the car chassis or Ground wire (black), or connect them in parallel.
- Connect speakers with a maximum power of more than 50 W. If the maximum power of the speakers is lower than 50 W, change the [AMP GAIN] setting to avoid damaging the speakers. (→ 18)
- Mount the unit at an angle of less than 30°.
- If your vehicle wiring harness does not have the ignition terminal, connect Ignition wire (red) to the terminal on the vehicle's fuse box which provides 12 V DC power supply and is turned on and off by the ignition key.
- Keep all cables away from heat dissipate metal parts.
- After the unit is installed, check whether the brake lamps, blinkers, wipers, etc. on the car are working properly.
- If the fuse blows, first make sure the wires are not touching car's chassis, then replace the old fuse with one that has the same rating.

Basic procedure

- 1 Remove the key from the ignition switch, then disconnect the \ominus terminal of the car battery.
- 2 Connect the wires properly.
See Wiring connection. (→ 25)
- 3 Install the unit to your car.
See Installing the unit (in-dash mounting).
- 4 Connect the \ominus terminal of the car battery.
- 5 Reset the unit. (→ 3)

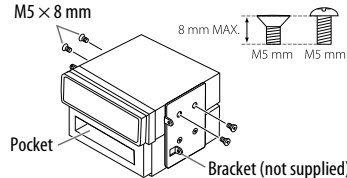
Installing the unit (in-dash mounting)



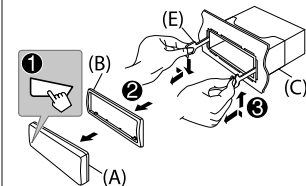
When installing without the mounting sleeve

- ▲ Use only the specified screws. Using wrong screws might damage the unit.

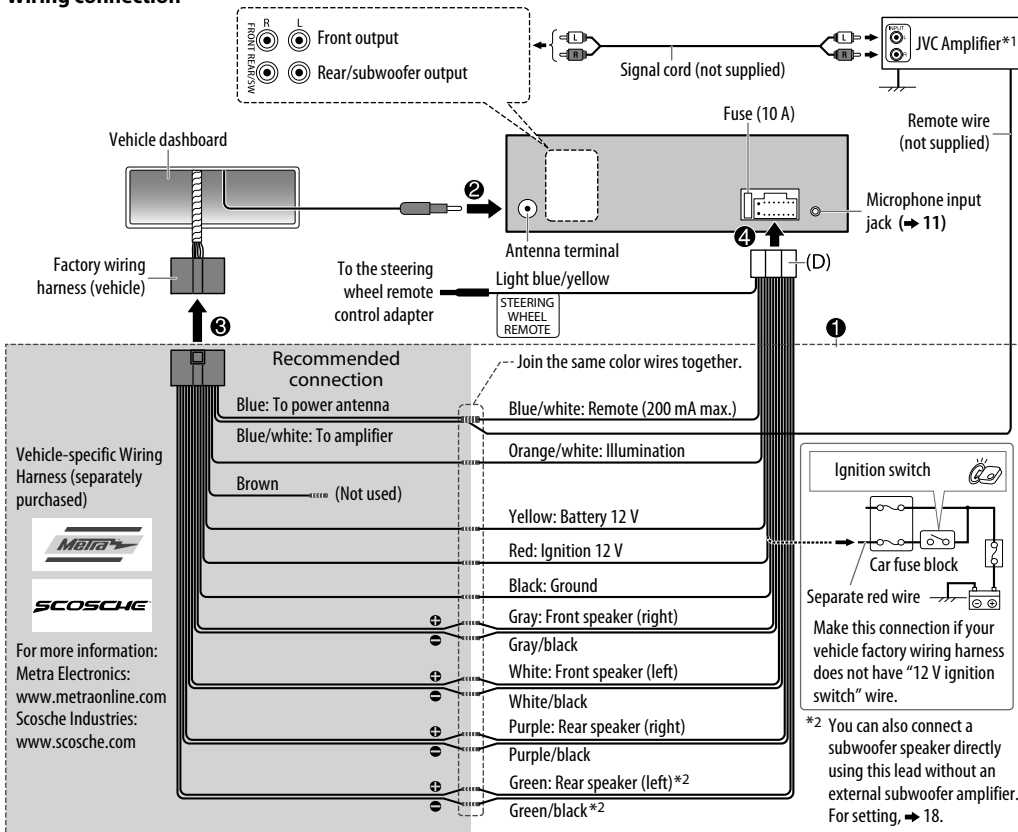
Flat or round head screws (not supplied)
M5 × 8 mm



How to remove the unit



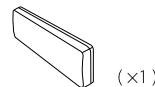
Wiring connection



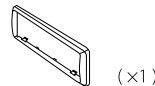
*1 Firmly connect the ground wire of the amplifier to the car's chassis to avoid damaging the unit.

Part list for installation

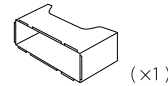
(A) Faceplate



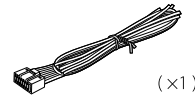
(B) Trim plate



(C) Mounting sleeve



(D) Wiring harness



(E) Extraction key



SPECIFICATIONS

Tuner	FM	Frequency Range	87.5 MHz — 108.0 MHz (50 kHz step)
		Usable Sensitivity (S/N = 26 dB)	8.2 dBf (0.71 μ V/75 Ω)
		Quieting Sensitivity (DIN S/N = 46 dB)	17.2 dBf (2.0 μ V/75 Ω)
		Frequency Response (± 3 dB)	30 Hz — 15 kHz
		Signal-to-Noise Ratio (MONO)	64 dB
		Stereo Separation (1 kHz)	40 dB
	AM	Frequency Range	Band 1 (MW): 531 kHz — 1 611 kHz (9 kHz step) Band 2 (SW1): 2 940 kHz — 7 735 kHz (5 kHz step) Band 3 (SW2): 9 500 kHz — 10 135 kHz / 11 580 kHz — 18 135 kHz (5 kHz step)
		Channel Space Selection	Band 1: 9 kHz Band 2/3: 5 kHz
		Usable Sensitivity (S/N = 20 dB)	MW: 29 dB μ (28.2 μ V) SW: 30 dB μ (32 μ V)

CD player	Laser Diode	GaAlAs
	Digital Filter (D/A)	8 times over sampling
	Spindle Speed	500 rpm — 200 rpm (CLV)
	Wow & Flutter	Below measurable limit
	Frequency Response (± 1 dB)	20 Hz — 20 kHz
	Total Harmonic Distortion (1 kHz)	0.01 %
	Signal-to-Noise Ratio (1 kHz)	105 dB
	Dynamic Range	90 dB
	Channel Separation	85 dB
	MP3 Decode	Compliant with MPEG-1/2 Audio Layer-3
WMA Decode	Compliant with Windows Media Audio	
AAC Decode	AAC-LC “.m4a” files	
USB	USB Standard	USB 1.1, USB 2.0 (Full speed)
	Compatible Devices	Mass storage class
	File System	FAT12/ 16/ 32
	Maximum Supply Current	DC 5 V $\overline{=}$ 1 A
	MP3 Decode	Compliant with MPEG-1/2 Audio Layer-3
	WMA Decode	Compliant with Windows Media Audio
	AAC Decode	AAC-LC “.m4a” files
WAV Decode	Linear-PCM	
Auxiliary	Frequency Response (± 3 dB)	20 Hz — 20 kHz
	Input Maximum Voltage	1 000 mV
	Input Impedance	30 k Ω

SPECIFICATIONS

Bluetooth	Version	Bluetooth Ver.2.1+EDR/ Bluetooth 3.0
	Frequency Range	2.402 GHz — 2.480 GHz
	Output Power	+4 dBm (MAX), 0 dBm (AVE) Power Class 2
	Maximum Communication Range	Line of sight approx. 10 m (32.8 ft)
	Pairing	SSP (Secure Simple Pairing)
Audio	Profile	HFP1.6 (Hands-Free Profile) A2DP (Advanced Audio Distribution Profile) AVRCP1.4 (Audio/Video Remote Control Profile) PBAP (Phonebook Access Profile) SPP (Serial Port Profile)
	Maximum Output Power	50 W × 4 or 50 W × 2 + 50 W × 1 (Subwoofer = 4 Ω)
	Full Bandwidth Power (at less than 1 % THD)	22 W × 4
	Speaker Impedance	4 Ω — 8 Ω
	Preout Level/Load (CD/USB)	2.500 mV/10 kΩ
	Preout Impedance	≤ 600 Ω
General	Operating Voltage (10.5 V — 16 V allowable)	14.4 V
	Maximum Current Consumption	10 A
	Operating Temperature Range	0°C — +40°C
	Installation Size (W × H × D)	182 mm × 53 mm × 158 mm
Weight	1.2 kg	

Subject to change without notice.



CLASS 1
LASER PRODUCT

The marking of products using lasers

The label is attached to the chassis/case and says that the component uses laser beams that have been classified as Class 1. It means that the unit is utilizing laser beams that are of a weaker class. There is no danger of hazardous radiation outside the unit.

- Microsoft and Windows Media are either registered trademarks or trademarks of Microsoft Corporation in the United States and/or other countries.
- “Made for iPod,” and “Made for iPhone” mean that an electronic accessory has been designed to connect specifically to iPod, or iPhone, respectively, and has been certified by the developer to meet Apple performance standards. Apple is not responsible for the operation of this device or its compliance with safety and regulatory standards. Please note that the use of this accessory with iPod or iPhone may affect wireless performance.
- iPhone, iPod, iPod classic, iPod nano, and iPod touch are trademarks of Apple Inc., registered in the U.S. and other countries.
- Lightning is a trademark of Apple Inc.
- Pandora, the Pandora logo, and the Pandora trade dress are trademarks or registered trademarks of Pandora Media, Inc., used with permission.
- iHeartRadio® is a registered mark of Clear Channel Broadcasting, Inc. in the United States and other countries. Such marks are used under license.
- The Bluetooth® word mark and logos are registered trademarks owned by Bluetooth SIG, Inc. and any use of such marks by JVC KENWOOD Corporation is under license. Other trademarks and trade names are those of their respective owners.
- Android is trademark of Google Inc.