



ENGLISH
FRANÇAIS
DEUTSCH
РУССКИЙ

KD-X330BT / KD-X33MBT

DIGITAL MEDIA RECEIVER

INSTRUCTION MANUAL

RÉCEPTEUR MULTIMÉDIA NUMÉRIQUE

MANUEL D'INSTRUCTIONS

DIGITAL-MEDIA-RECEIVER

BEDIENUNGSANLEITUNG

ЦИФРОВОЙ МУЛЬТИМЕДИЙНЫЙ РЕСИВЕР

ИНСТРУКЦИЯ ПО ЭКСПЛУАТАЦИИ

JVCKENWOOD Corporation

Made for

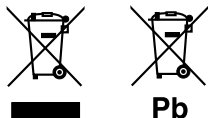


iPod



iPhone





Information on Disposal of Old Electrical and Electronic Equipment and Batteries (applicable for countries that have adopted separate waste collection systems)

Products and batteries with the symbol (crossed-out wheeled bin) cannot be disposed as household waste.

Old electrical and electronic equipment and batteries should be recycled at a facility capable of handling these items and their waste byproducts.

Contact your local authority for details in locating a recycle facility nearest to you. Proper recycling and waste disposal will help conserve resources whilst preventing detrimental effects on our health and the environment.

Notice: The sign "Pb" below the symbol for batteries indicates that this battery contains lead.

Information sur l'élimination des anciens équipements électriques et électroniques et piles électriques (applicable dans les pays qui ont adopté des systèmes de collecte sélective)

Les produits et piles électriques sur lesquels le pictogramme (poubelle barrée) est apposé ne peuvent pas être éliminés comme ordures ménagères.

Les anciens équipements électriques et électroniques et piles électriques doivent être recyclés sur des sites capables de traiter ces produits et leurs déchets.

Contactez vos autorités locales pour connaître le site de recyclage le plus proche. Un recyclage adapté et l'élimination des déchets aideront à conserver les ressources et à nous préserver des leurs effets nocifs sur notre santé et sur l'environnement.

Remarque: Le symbole "Pb" ci-dessous sur des piles électrique indique que cette pile contient du plomb.

Entsorgung von gebrauchten elektrischen und elektronischen Geräten und Batterien (anzuwenden in Ländern mit einem separaten Sammelsystem für solche Geräte)

Das Symbol (durchgestrichene Mülltonne) auf dem Produkt oder seiner Verpackung weist darauf hin, dass dieses Produkt nicht als normaler Haushaltsabfall behandelt werden darf, sondern an einer Annahmestelle für das Recycling von elektrischen und elektronischen Geräten und Batterien abgegeben werden muss.

Durch Ihren Beitrag zur korrekten Entsorgung dieses Produktes schützen Sie die Umwelt und die Gesundheit Ihrer Mitmenschen.

Unsachgemäße oder falsche Entsorgung gefährden Umwelt und Gesundheit. Weitere Informationen über das Recycling dieses Produktes erhalten Sie von Ihrer Gemeinde oder den kommunalen Entsorgungsbetrieben.

Achtung: Das Zeichen „Pb“ unter dem Symbol für Batterien zeigt an, dass diese Batterie Blei enthält.



Дата изготовления (месяц/год) находится на этикетке устройства.

В соответствии с Законом Российской Федерации "О защите прав потребителей" срок службы (годности) данного товара "О защите прав потребителей" срок службы (годности) данного товара "по истечении которого он может представлять опасность для жизни, здоровья потребителя, причинять вред его имуществу или окружающей среде" составляет семь (7) лет со дня производства. Этот срок является временем, в течение которого потребитель данного товара может безопасно им пользоваться при условии соблюдения инструкции по эксплуатации данного товара, проводя необходимое обслуживание, включающее замену расходных материалов и/или соответствующее ремонтное обеспечение в специализированном сервисном центре.

Дополнительные косметические материалы к данному товару, поставляемые вместе с ним, могут храниться в течение двух (2) лет со дня его производства.

Срок службы (годности), кроме срока хранения дополнительных косметических материалов, упомянутых в предыдущих двух пунктах, не затрагивает никаких других прав потребителя, в частности, гарантийного свидетельства JVC, которое он может получить в соответствии с законом о правах потребителя или других законов, связанных с ним.

libFLAC

Copyright (C) 2000,2001,2002,2003,2004,2005,2006,2007,2008,2009 Josh Coalson

Redistribution and use in source and binary forms, with or without modification, are permitted provided that the following conditions are met:

- Redistributions of source code must retain the above copyright notice, this list of conditions and the following disclaimer.
- Redistributions in binary form must reproduce the above copyright notice, this list of conditions and the following disclaimer in the documentation and/or other materials provided with the distribution.
- Neither the name of the Xiph.org Foundation nor the names of its contributors may be used to endorse or promote products derived from this software without specific prior written permission.

THIS SOFTWARE IS PROVIDED BY THE COPYRIGHT HOLDERS AND ONTRIBUTORS "AS IS" AND ANY EXPRESS OR IMPLIED WARRANTIES, INCLUDING, BUT NOT LIMITED TO, THE IMPLIED WARRANTIES OF MERCHANTABILITY AND FITNESS FOR A PARTICULAR PURPOSE ARE DISCLAIMED. IN NO EVENT SHALL THE FOUNDATION OR CONTRIBUTORS BE LIABLE FOR ANY DIRECT, INDIRECT, INCIDENTAL, SPECIAL, EXEMPLARY, OR CONSEQUENTIAL DAMAGES (INCLUDING, BUT NOT LIMITED TO, PROCUREMENT OF SUBSTITUTE GOODS OR SERVICES; LOSS OF USE, DATA, OR PROFITS; OR BUSINESS INTERRUPTION) HOWEVER CAUSED AND ON ANY THEORY OF LIABILITY, WHETHER IN CONTRACT, STRICT LIABILITY, OR TORT (INCLUDING NEGLIGENCE OR OTHERWISE) ARISING IN ANY WAY OUT OF THE USE OF THIS SOFTWARE, EVEN IF ADVISED OF THE POSSIBILITY OF SUCH DAMAGE.

For Israel

מידע בדבר השלכה לאשפה של ציוד חשמלי ואלקטרוני ישן וכן סוללות (רלוונטי למדינות שמשתמשות במערכת איסוף אשפה מופרדת).

לא ניתן להשליך מוצרים וסוללות עם הסימון (פח אשפה עם X עליו) כאשפה ביתית רגילה. יש למחזר ציוד חשמלי ואלקטרוני ישן וכן סוללות במתקן המסוגל לטפל בפריטים כאלה ובתוצרי הלוואי שלהם. צרו קשר עם הרשות המקומית לקבלת פרטים אודות מתקן המיחזור הקרוב אליכם. מיחזור והשלכה לאשפה נאותים יעזרו לשמר משאבים ולמנוע השפעות שליליות על בריאותנו ועל הסביבה. שימו לב: הסימון Pb שמתחת לסימון עבור סוללות מצוין שהסוללה מכילה עופרת.



Declaration of Conformity with regard to the R&TTE Directive 1999/5/EC
Declaration of Conformity with regard to the EMC Directive
Declaration of Conformity with regard to the RoHS Directive 2011/65/EU
Manufacturer:

JVC KENWOOD Corporation
3-12, Moriya-cho, Kanagawa-ku, Yokohama-shi, Kanagawa, 221-0022, Japan

EU Representative:

JVC Technical Services Europe GmbH
Konrad-Adenauer-Allee 1-11, D-61118 Bad Vilbel, Germany

Déclaration de conformité vis à vis de la Directive 1999/5/CE de R&TTE
Déclaration de conformité se rapportant à la directive EMC
Déclaration de conformité se rapportant à la directive RoHS 2011/65/EU
Fabricant:

JVC KENWOOD Corporation
3-12, Moriya-cho, Kanagawa-ku, Yokohama-shi, Kanagawa, 221-0022, Japan

Représentants dans l'UE:

JVC Technical Services Europe GmbH
Konrad-Adenauer-Allee 1-11, D-61118 Bad Vilbel, Germany

Konformitätserklärung in Bezug auf die R&TTE-Vorschrift 1999/5/EG
Konformitätserklärung in Bezug auf die EMC-Vorschrift
Konformitätserklärung in Bezug auf die RoHS-Vorschrift 2011/65/EU
Hersteller:

JVC KENWOOD Corporation
3-12, Moriya-cho, Kanagawa-ku, Yokohama-shi, Kanagawa, 221-0022, Japan

EU-Vertreter:

JVC Technical Services Europe GmbH
Konrad-Adenauer-Allee 1-11, D-61118 Bad Vilbel, Germany

Декларация соответствия относительно Директивы R&TTE 1999/5/EC
Декларация соответствия относительно Директивы EMC
Декларация соответствия относительно Директивы RoHS 2011/65/EU

Производитель:

JVC KENWOOD Corporation
3-12 Moriya-cho, Kanagawa-ku, Yokohama-shi, Kanagawa, 221-0022, Japan

Представительство в ЕС:

JVC Technical Services Europe GmbH
Konrad-Adenauer-Allee 1-11, D-61118 Bad Vilbel, Germany

English

Hereby, JVC KENWOOD declares that this unit KD-X330BT/KD-X33MBT is in compliance with the essential requirements and other relevant provisions of Directive 1999/5/EC.

Français

Par la présente JVC KENWOOD déclare que l'appareil KD-X330BT/KD-X33MBT est conforme aux exigences essentielles et aux autres dispositions pertinentes de la directive 1999/5/CE. Par la présente, JVC KENWOOD déclare que ce KD-X330BT/KD-X33MBT est conforme aux exigences essentielles et aux autres dispositions de la directive 1999/5/CE qui lui sont applicables.

Deutsch

Hiermit erklärt JVC KENWOOD, dass sich dieser KD-X330BT/KD-X33MBT in Übereinstimmung mit den grundlegenden Anforderungen und den anderen relevanten Vorschriften der Richtlinie 1999/5/EG befindet. (BMWi)
Hiermit erklärt JVC KENWOOD die Übereinstimmung des Gerätes KD-X330BT/KD-X33MBT mit den grundlegenden Anforderungen und den anderen relevanten Festlegungen der Richtlinie 1999/5/EG. (Wien)

Nederlands

Hierbij verklaart JVC KENWOOD dat het toestel KD-X330BT/KD-X33MBT in overeenstemming is met de essentiële eisen en de andere relevante bepalingen van richtlijn 1999/5/EG.
Bij deze verklaart JVC KENWOOD dat deze KD-X330BT/KD-X33MBT voldoet aan de essentiële eisen en aan de overige relevante bepalingen van Richtlijn 1999/5/EC.

Italiano

Con la presente JVC KENWOOD dichiara che questo KD-X330BT/KD-X33MBT è conforme ai requisiti essenziali ed alle altre disposizioni pertinenti stabilite dalla direttiva 1999/5/CE.

Español

Por medio de la presente JVC KENWOOD declara que el KD-X330BT/KD-X33MBT cumple con los requisitos esenciales y cualesquiera otras disposiciones aplicables o exigibles de la Directiva 1999/5/CE.

Português

JVC KENWOOD declara que este KD-X330BT/KD-X33MBT está conforme com os requisitos essenciais e outras disposições da Directiva 1999/5/CE.

Polska

JVC KENWOOD niniejszym oświadcza, że KD-X330BT/KD-X33MBT spełnia zasadnicze wymogi oraz inne istotne postanowienia dyrektywy 1999/5/EC.

Český

JVC KENWOOD tímto prohlašuje, že tento KD-X330BT/KD-X33MBT je ve shodě se základními požadavky a dalšími příslušnými ustanoveními směrnice 1999/5/EC.

Magyar

Alulírott, JVC KENWOOD, kijelenti, hogy a jelen KD-X330BT/KD-X33MBT megfelel az 1999/5/EC irányelvben meghatározott alapvető követelményeknek és egyéb vonatkozó előírásoknak.

Svenska

Härmed intygar JVC KENWOOD att denna KD-X330BT/KD-X33MBT står i överensstämmelse med de väsentliga egenskapskrav och övriga relevanta bestämmelser som framgår av direktiv 1999/5/EC.

Suomi

JVC KENWOOD vakuuttaa täten että KD-X330BT/KD-X33MBT tyypinen laite on direktiivin 1999/5/EY oleellisten vaatimusten ja sitä koskevien direktiivin muiden ehtojen mukainen.

Slovensko

Stem JVC KENWOOD izjavlja, da je ta KD-X330BT/KD-X33MBT v skladu z osnovnimi zahtevami in ostalimi ustreznimi predpisi Direktive 1999/5/EC.

Slovensky

Spoločnosť JVC KENWOOD týmto vyhlasuje, že KD-X330BT/KD-X33MBT spĺňa základné požiadavky a ďalšie príslušné ustanovenia Direktívy 1999/5/EC.

Dansk

Undertegnede JVC KENWOOD erklærer herved, at følgende udstyr KD-X330BT/KD-X33MBT overholder de væsentlige krav og øvrige relevante krav i direktiv 1999/5/EF.

Ελληνικά

ΜΕ ΤΗΝ ΠΑΡΟΥΣΑ JVC KENWOOD ΔΗΛΩΝΕΙ ΟΤΙ ΤΟ ΚΑΤΑΣΤΡΟΦΟΡΟ KD-X33MBT ΣΥΜΜΟΡΦΟΝΕΤΑΙ ΠΡΟΣ ΤΙΣ ΟΥΣΙΩΔΕΙΣ ΑΠΑΙΤΗΣΕΙΣ ΚΑΙ ΤΙΣ ΛΟΙΠΕΣ ΣΧΕΤΙΚΕΣ ΔΙΑΤΑΞΕΙΣ ΤΗΣ ΟΔΗΓΙΑΣ 1999/5/ΕΚ.

Eesti

Sellega kinnitab JVC KENWOOD, et see KD-X330BT/KD-X33MBT vastab direktiivi 1999/5/EC põhilistele nõudmistele ja muudele asjakohastele määrustele.

Latviešu

Ar šo, JVC KENWOOD, apstiprina, ka KD-X330BT/KD-X33MBT atbilst Direktīvas 1999/5/EK galvenajām prasībām un citiem tās nosacījumiem.

Lietuviškai

Šiuo, JVC KENWOOD, pareiškia, kad šis KD-X330BT/KD-X33MBT atitinka pagrindinius Direktyvos 1999/5/EB reikalavimus ir kitas svarbias nuostatas.

Malti

Hawnhekk, JVC KENWOOD, jiddikjara li dan KD-X330BT/KD-X33MBT jikkonforma mal-htigijiet essenzzjali u ma provvedimenti oħrajn relevanti li hemm fid-Direttiva 1999/5/EC.

Українська

Компанія JVC KENWOOD заявляє, що цей виріб KD-X330BT/KD-X33MBT відповідає ключовим вимогам та іншим пов'язаним положенням Директиви 1999/5/EC.

Turkish

Bu vesileyle JVC KENWOOD, KD-X330BT/KD-X33MBT ünitesinin, 1999/5/EC Direktifinin başlıca gereksinimleri ve diğer ilgili hükümleri ile uyumlu olduğunu beyan eder.

Русский

Настоящим, JVC КЕНВУД декларирует, что это устройство “KD-X330BT/KD-X33MBT” соответствует необходимым требованиям и другим важным положениям директивы 1999/5/EC.

Україна

Цим, JVC KENWOOD декларує, що цей виріб “KD-X330BT/KD-X33MBT” Відповідає суттєвим вимогам та іншим відповідним пунктам Директиви 1999/5/EC.

CONTENTS

BEFORE USE	2
BASICS	3
GETTING STARTED	4
1 Cancel the demonstration	
2 Set the clock	
3 Set the basic settings	
RADIO	5
AUX	6
USB / iPod / ANDROID	7
BLUETOOTH®	9
AUDIO SETTINGS	14
DISPLAY SETTINGS	18
REFERENCES	19
Maintenance	
More information	
TROUBLESHOOTING	21
SPECIFICATIONS	23
INSTALLATION / CONNECTION	24

BEFORE USE

IMPORTANT

- To ensure proper use, please read through this manual before using this product. It is especially important that you read and observe Warning and Caution in this manual.
- Please keep the manual in a safe and accessible place for future reference.

▲ Warning

Do not operate any function that takes your attention away from safe driving.

▲ Caution

Volume setting:

- Adjust the volume so that you can hear sounds outside the car to prevent accidents.
- Lower the volume before playing digital sources to avoid damaging the speakers by the sudden increase of the output level.

General:

- Avoid using the external device if it might hinder safe driving.
- Make sure all important data has been backed up. We shall bear no responsibility for any loss of recorded data.
- Never put or leave any metallic objects (such as coins or metal tools) inside the unit to prevent a short circuit.

Remote control (RM-RK52):

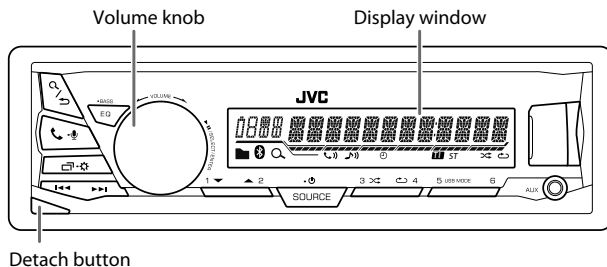
- Do not leave the remote control in hot places such as on the dashboard.
- The Lithium battery is in danger of explosion if replaced incorrectly. Replace it only with the same or equivalent type.
- The battery pack or batteries shall not be exposed to excessive heat such as sunshine, fire or the like.
- Keep the battery out of reach of children and in its original packaging when not in used. Dispose of used batteries promptly. If swallowed, contact a physician immediately.

How to read this manual

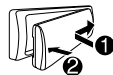
- Operations are explained mainly using buttons on the faceplate of KD-X330BT.
- English indications are used for the purpose of explanation. You can select the display language from the menu. (➔ 4)
- [XX] indicates the selected items.
- (➔ XX) indicates references are available on the stated page.

BASICS

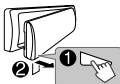
Faceplate



Attach



Detach



How to reset

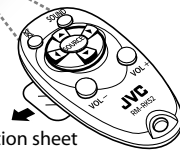


Press the switch twice within 5 seconds after detaching the faceplate.

Remote control (RM-RK52)

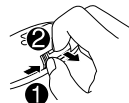
KD-X33MBT can be remotely controlled with an optionally purchased remote control.

Remote sensor (Do not expose to bright sunlight.)



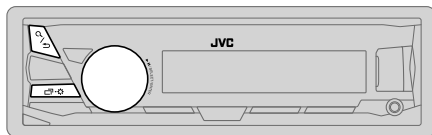
Pull out the insulation sheet when using for the first time.

How to replace the battery



To	On the faceplate	On the remote control
Turn on the power	Press SOURCE . • Press and hold to turn off the power.	(Not available)
Adjust the volume	Turn the volume knob. Press the volume knob to mute the sound or pause playback. • Press again to cancel.	Press VOL + or VOL - . Press to mute the sound or pause playback. • Press again to cancel.
Select a source	• Press SOURCE repeatedly. • Press SOURCE , then turn the volume knob within 2 seconds.	Press SOURCE repeatedly.
Change the display information	Press repeatedly. (→ 20)	(Not available)

GETTING STARTED



1 Cancel the demonstration

When you turn on the power for the first time (or [FACTORY RST] is set to [YES]), the display shows: "CANCEL DEMO" → "PRESS" → "VOLUME KNOB"

- 1 Press the volume knob.
[YES] is selected for the initial setup.
- 2 Press the volume knob again.
"DEMO OFF" appears.

2 Set the clock

- 1 Press and hold to turn on the power.
- 2 Turn the volume knob to select [CLOCK], then press the knob.
- 3 Turn the volume knob to select [CLOCK SET], then press the knob.
- 4 Turn the volume knob to make the settings, then press the knob.
Day → Hour → Minute
- 5 Turn the volume knob to select [24H/ 12H], then press the knob.
- 6 Turn the volume knob to select [12 HOUR] or [24 HOUR], then press the knob.
- 7 Press to exit.

To return to the previous setting item, press / .

3 Set the basic settings

- 1 Press and hold to turn on the power.
- 2 Turn the volume knob to select an item (see the following table), then press the knob.
- 3 Repeat step 2 until the desired item is selected or activated.
- 4 Press to exit.

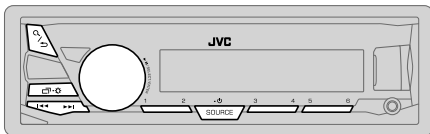
To return to the previous setting item, press / .

Default: **XX**

SETTINGS	
BEEP	(Not applicable when 3-way crossover is selected.) ON : Activates the keypress tone. ; OFF : Deactivates.
SRC SELECT	
AM*	ON : Enables AM in source selection. ; OFF : Disables.
AUX*	ON : Enables AUX in source selection. ; OFF : Disables.
F/W UPDATE	
SYSTEM	
F/W xxxx	YES : Starts upgrading the firmware. ; NO : Cancels (upgrading is not activated). For details on how to update the firmware, see: < http://www.jvc.net/cs/car/ >.
FACTORY RST	YES : Resets the settings to default (except the stored station). ; NO : Cancels.
CLOCK	
CLOCK SYNC	AUTO : The clock time is automatically set using the Clock Time (CT) data in FM Radio Data System signal. ; OFF : Cancels.
CLOCK DISP	ON : The clock time is shown on the display even when the unit is turned off. ; OFF : Cancels.
ENGLISH	
РУССКИЙ	Select the display language for menu and music information if applicable. By default, ENGLISH is selected.
ESPAÑOL	

* Not displayed when the corresponding source is selected.

RADIO



"ST" lights up when receiving an FM stereo broadcast with sufficient signal strength.

Search for a station

- 1 Press **SOURCE** repeatedly to select FM or AM.
- 2 Press (or press on RM-RK52) to search for a station automatically.
(or)
Press and hold (or press and hold on RM-RK52) until "M" flashes, then press repeatedly to search for a station manually.

Settings in memory

You can store up to 18 stations for FM and 6 stations for AM.

Store a station

While listening to a station....

Press and hold one of the number buttons (1 to 6).
(or)

- 1 Press and hold the volume knob until "PRESET MODE" flashes.
- 2 Turn the volume knob to select a preset number, then press the knob.
The preset number flashes and "MEMORY" appears.

Select a stored station

Press one of the number buttons (1 to 6).
(or)

- 1 Press .
- 2 Turn the volume knob to select a preset number, then press the knob to confirm.

Other settings

- 1 Press and hold .
- 2 Turn the volume knob to select [TUNER], then press the knob.
- 3 Turn the volume knob to select an item (see the following table), then press the knob.
- 4 Repeat step 3 until the desired item is selected/activated or follow the instructions stated on the selected item.
- 5 Press to exit.

To return to the previous setting item, press .

Default: **XX**

RADIO TIMER	<p>Turns on the radio at a specific time regardless of the current source.</p> <ol style="list-style-type: none">1 ONCE/ DAILY/ WEEKLY/ OFF: Select how often the timer will be turned on.2 FM/ AM: Select the band.3 01 to 18 (for FM)/ 01 to 06 (for AM): Select the preset station.4 Set the activation day*1 and time. "⊙" lights up when complete. <p>Radio Timer will not activate for the following cases.</p> <ul style="list-style-type: none">• The unit is turned off.• [OFF] is selected for [AM] in [SRC SELECT] after Radio Timer for AM is selected. (→ 4)
SSM	<p>SSM 01 – 06 / SSM 07 – 12 / SSM 13 – 18: Automatically presets up to 18 stations for FM. "SSM" stops flashing when the first 6 stations are stored. Select SSM 07 – 12 / SSM 13 – 18 to store the following 12 stations.</p>

*1 Selectable only when [ONCE] or [WEEKLY] is selected in step 1.

RADIO

Default: **XX**

LOCAL SEEK	ON: Searches only FM stations with good reception. ; OFF: Cancels. • Settings made are applicable only to the selected source/station. Once you change the source/station, you need to make the settings again.
IF BAND	AUTO: Increases the tuner selectivity to reduce interference noises from adjacent FM stations. (Stereo effect may be lost.) ; WIDE: Subjects to interference noises from adjacent FM stations, but sound quality will not be degraded and the stereo effect will remain.
MONO	ON: Improves the FM reception, but the stereo effect will be lost. ; OFF: Cancels.
NEWS-STBY*2	ON: The unit will temporarily switch to News Programme if available. ; OFF: Cancels.
REGIONAL*2	ON: Switches to another station only in the specific region using the "AF" control. ; OFF: Cancels.
AF SET*2	ON: Automatically searches for another station broadcasting the same program in the same Radio Data System network with better reception when the current reception is poor. ; OFF: Cancels.
TI SET*2	ON: Allows the unit to temporarily switch to Traffic Information if available ("TI" lights up). ; OFF: Cancels.
PTY SEARCH*2	Select a PTY code (see below). If there is a station broadcasting a program of the same PTY code as you have selected, that station is tuned in.

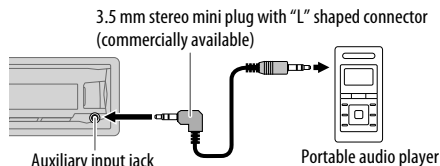
PTY code: NEWS, AFFAIRS, INFO, SPORT, EDUCATE, DRAMA, CULTURE, SCIENCE, VARIED, POP M (music), ROCK M (music), EASY M (music), LIGHT M (music), CLASSICS, OTHER M (music), WEATHER, FINANCE, CHILDREN, SOCIAL, RELIGION, PHONE IN, TRAVEL, LEISURE, JAZZ, COUNTRY, NATION M (music), OLDIES, FOLK M (music), DOCUMENT

*2 Only for FM source.

AUX

Use a portable audio player

1 Connect a portable audio player (commercially available).



2 Select [ON] for [AUX] in [SRC SELECT]. (→ 4)

3 Press **SOURCE** repeatedly to select **AUX**.

4 Turn on the portable audio player and start playback.



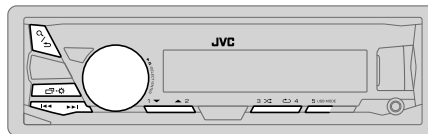
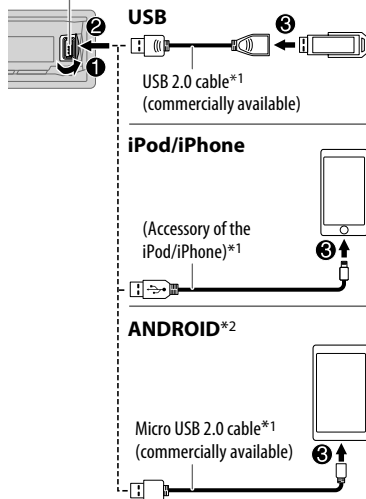
Use a 3-core plug head stereo mini plug for optimum audio output.

USB / iPod / ANDROID

Start playback

The source changes automatically and playback starts.

USB input terminal



To	On the faceplate	On the remote control
Reverse / Fast-forward* ³	Press and hold ◀◀ / ▶▶.	Press and hold ◀/▶.
Select a file	Press ◀◀ / ▶▶.	Press ◀/▶.
Select a folder* ⁴	Press 2 ▲ / 1 ▼.	Press ▲/▼.
Repeat play* ⁵	Press 4 ↺ repeatedly. TRACK RPT/ FOLDER RPT/ ALL RPT : MP3/WMA/AAC/WAV/FLAC file ONE RPT/ ALL RPT/ RPT OFF : iPod or ANDROID	
Random play* ⁵	Press 3 ↻ repeatedly. FOLDER RND/ ALL RND/ RND OFF : MP3/WMA/AAC/WAV/FLAC file SONG RND/ ALL RND/ RND OFF : iPod or ANDROID	

*1 Do not leave the cable inside the car when not using.

*2 When connecting an Android device, "Press [VIEW] to install JVC MUSIC PLAY APP" is shown. Follow the instructions to install the application. You can also install the latest version of JVC MUSIC PLAY application on your Android device before connecting. (➔ 19)

*3 For ANDROID: Applicable only when [AUTO MODE] is selected. (➔ 8)

*4 Only for MP3/WMA/AAC/WAV/FLAC files. This does not work for iPod/ ANDROID.

*5 For iPod/ ANDROID: Applicable only when [HEAD MODE]/ [AUTO MODE] is selected. (➔ 8)

USB / iPod / ANDROID

Select control mode

While in USB-IPOD source, press **5 USB MODE** repeatedly.

HEAD MODE: Control iPod from this unit.

IPHONE MODE: Control iPod using the iPod itself. However, you can still play/pause or file skip from this unit.

While in ANDROID source, press **5 USB MODE** repeatedly.

AUTO MODE: Control Android device from this unit via JVC MUSIC PLAY application installed in the Android device.

AUDIO MODE: Control Android device using the Android device itself via other media player applications installed in the Android device. However, you can still play/pause or file skip from this unit.

Select music drive

Press **5 USB MODE** repeatedly.

Stored songs in the following drive will be played back.

- Selected internal or external memory of a smartphone (Mass Storage Class).
- Selected drive of a multiple drives device.

Select a file from a folder/list

- 1 Press **Q/➤**.
- 2 Turn the volume knob to select a folder/list, then press the knob.
- 3 Turn the volume knob to select a file, then press the knob.

Quick Search

If you have many files, you can search through them quickly.

Turn the volume knob quickly to browse through the list quickly.

– Not applicable for iPod.

Alphabet search (applicable only for iPod):

You can search for a file according to the first character.

Press 2 ▲ / 1 ▼ or turn the volume knob quickly to select the desired character (A to Z/ 0 to 9/ OTHERS).

– Select “OTHERS” if the first character is other than A to Z, 0 to 9.

- To return to the previous setting item, press **Q/➤**.
- To cancel, press and hold **Q/➤**.
- For iPod, applicable only when [HEAD MODE] is selected.
- For ANDROID, applicable only when [AUTO MODE] is selected.

BLUETOOTH®

BLUETOOTH — Connection

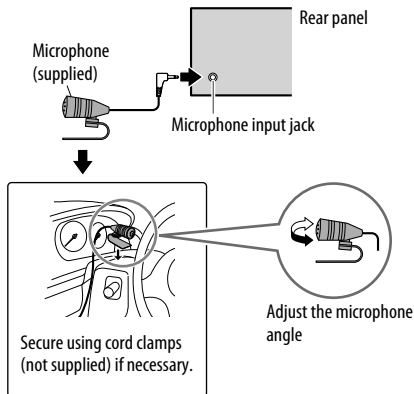
Supported Bluetooth profiles

- Hands-Free Profile (HFP)
- Advanced Audio Distribution Profile (A2DP)
- Audio/Video Remote Control Profile (AVRCP)
- Serial Port Profile (SPP)
- Phonebook Access Profile (PBAP)

Supported Bluetooth codecs

- Sub Band Codec (SBC)
- Advanced Audio Coding (AAC)

Connect the microphone



Pair and connect a Bluetooth device for the first time

- 1 Press **SOURCE** + to turn on the unit.
- 2 Search and select **"JVC UNIT"** on the Bluetooth device.
"BT PAIRING" flashes on the display.
 - For some Bluetooth devices, you may need to enter the Personal Identification Number (PIN) code immediately after searching.
- 3 Perform (A) or (B) depending on what scrolls on the display.
For some Bluetooth devices, pairing sequence may vary from the steps described below.
(A) "[Device Name]" → "XXXXXX" → "VOL – YES" → "BACK – NO"
"XXXXXX" is a 6-digit passkey randomly generated during each pairing.
 - 1 Ensure that the passkey which appears on the unit and Bluetooth device is the same.
 - 2 Press the volume knob to confirm the passkey.
 - 3 Operate the Bluetooth device to confirm the passkey.
(B) "[Device Name]" → "VOL – YES" → "BACK – NO"
 - 1 Press the volume knob to start pairing.
 - 2 If "PAIRING" → "PIN 0000" scrolls on the display, enter the PIN code "0000" into the Bluetooth device.
You can change to a desired PIN code before pairing. (→ 13)
If only "PAIRING" appears, operate the Bluetooth device to confirm pairing.
"PAIRING COMPLETED" appears when pairing is completed and will light up when the Bluetooth connection is established.

Lights up to show the battery strength and signal strength.*



* Functionality depends on the type of the phone used.

- This unit supports Secure Simple Pairing (SSP).
- Up to 10 devices can be registered (paired) in total.
- Once the pairing is completed, the Bluetooth device will remain registered in the unit even if you reset the unit. To delete the paired device, → 13, [DELETE PAIR].
- A maximum of two Bluetooth phones and one Bluetooth audio device can be connected at any time.
- Some Bluetooth devices may not automatically connect to the unit after pairing. Connect the device to the unit manually.
- Refer to the instruction manual of the Bluetooth device for more information.

BLUETOOTH®

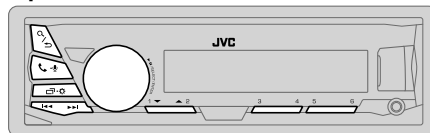
Auto Pairing

When you connect the iPhone/ iPod touch/ Android device to the USB input terminal, pairing request (via Bluetooth) is automatically activated.

Press the volume knob to pair once you have confirmed the device name.

- Automatic pairing request is activated only if:
- Bluetooth function of the connected device is turned on.
 - [AUTO CNNT] is set to [ON]. (➔ 13)
 - JVC MUSIC PLAY application is installed on the Android device (➔ 7) and [AUTO MODE] is selected (➔ 8).

BLUETOOTH — Mobile phone



Receive a call

When there is an incoming call:

- The buttons will blink in the blinking pattern you have selected in [RING ILLUMI]. (➔ 11)
- The unit answers the call automatically if [AUTO ANSWER] is set to a selected time. (➔ 11)

During a call:

- The buttons stop blinking.
- If you turn off the unit or detach the faceplate, the Bluetooth connection is disconnected.

To	On the faceplate	On the remote control
First incoming call...		
Answer a call	Press - or the volume knob.	Press / / / .
Reject a call	Press and hold - or the volume knob.	Press and hold / / / .
End a call	Press and hold - or the volume knob.	Press and hold / / / .

BLUETOOTH®

To	On the faceplate	On the remote control
While talking on the first incoming call...		
Answer another incoming call and hold the current call	Press - or the volume knob.	(Not available)
Reject another incoming call	Press and hold - or the volume knob.	(Not available)
While having two active calls...		
End current call and activate held call	Press and hold - or the volume knob.	Press and hold / / / .
Swap between the current call and held call	Press - .	(Not available)
Adjust the phone volume [00] to [35] (Default: [15])	Turn the volume knob during a call. • This adjustment will not affect the volume of the other sources.	(Not available)
Switch between hands-free and private talk modes	Press / during a call. • Operations may vary according to the connected Bluetooth device.	(Not available)

Improve the voice quality

While talking on the phone....

- 1 Press and hold - .
- 2 Turn the volume knob to select an item (see the following table), then press the knob.
- 3 Repeat step 2 until the desired item is selected or activated.
- 4 Press - to exit.

To return to the previous setting item, press / .

Default: **XX**

MIC LEVEL	-10 — +10 (-4): The sensitivity of the microphone increases as the number increased.
NOISE RDCT	-5 — +5 (0): Adjust the noise reduction level until the least noise is being heard during a phone conversation.
ECHO CANCEL	-5 — +5 (0): Adjust the echo cancellation delay time until the least echo is being heard during a phone conversation.

Make the settings for receiving a call

- 1 Press - to enter Bluetooth mode.
- 2 Turn the volume knob to select an item (see the following table), then press the knob.
- 3 Repeat step 2 until the desired item is selected or activated.

To return to the previous setting item, press / .

Default: **XX**

SETTINGS	
AUTO ANSWER	01 SEC — 30 SEC: The unit answers incoming call automatically in the selected time (in seconds). ; OFF : Cancels.
RING ILLUMI	BLINK 1 — BLINK 5 (BLINK 2): Selects the notification blinking pattern for the buttons when there is an incoming call. ; OFF : Cancels.

BLUETOOTH®

Make a call

You can make a call from the call history, phonebook, or dialing the number. Call by voice is also possible if your mobile phone has the feature.

- 1 Press **📞** to enter Bluetooth mode.
- 2 Turn the volume knob to select an item (see the following table), then press the knob.
- 3 Repeat step 2 until the desired item is selected/activated or follow the instructions stated on the selected item.

To return to the previous setting item, press **Q** / **↩**.

RECENT CALL	(Applicable only if the phone supports PBAP) 1 Press the volume knob to select a name or a phone number. <ul style="list-style-type: none">• “<” indicates call received, “>” indicates call made, “M” indicates call missed.• “NO HISTORY” appears if there is no recorded call history or call number. 2 Press the volume knob to call.
PHONEBOOK	(Applicable only if the phone supports PBAP) 1 Press 2 ▲ / 1 ▼ to select the desired letter (A to Z, 0 to 9, and OTHERS). <ul style="list-style-type: none">• “OTHERS” appears if the first character is other than A to Z, 0 to 9. 2 Turn the volume knob to select a name, then press the knob. 3 Turn the volume knob to select a phone number, then press the knob to call. <ul style="list-style-type: none">• The phonebook of the connected phone is automatically transferred to the unit when pairing.• This unit can display only non-accent letters. (Accent letters such as “Ú” is shown as “U”.)
DIAL NUMBER	1 Turn the volume knob to select a number (0 to 9) or character (*, #, +). 2 Press ◀ / ▶ to move the entry position. Repeat steps 1 and 2 until you finish entering the phone number. 3 Press the volume knob to call.
VOICE	Speak the name of the contact you want to call or the voice command to control the phone functions. (➡ Make a call using voice recognition)

Make a call using voice recognition

- 1 Press and hold **📞** to activate the connected phone.
 - 2 Speak the name of the contact you want to call or the voice command to control the phone functions.
- Supported Voice Recognition features vary for each phone. Refer to the instruction manual of the connected phone for details.
 - This unit also supports the intelligent personal assistant function of iPhone.

Settings in memory

Store a contact in memory

You can store up to 6 contacts into the number buttons (1 to 6).

- 1 Press **📞** to enter Bluetooth mode.
- 2 Turn the volume knob to select [RECENT CALL], [PHONEBOOK], or [DIAL NUMBER], then press the knob.
- 3 Turn the volume knob to select a contact or enter a phone number.
If a contact is selected, press the volume knob to show the phone number.
- 4 Press and hold one of the number buttons (1 to 6).
“MEMORY P(selected preset number)” appears when the contact is stored.

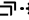

To erase a contact from the preset memory, select [DIAL NUMBER] in step 2 and store a blank number.


Make a call from memory

- 1 Press **📞** to enter Bluetooth mode.
- 2 Press one of the number buttons (1 to 6).
- 3 Press the volume knob to call.
“NO PRESET” appears if there is no contacts stored.

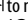
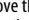
BLUETOOTH®

Bluetooth mode settings

- 1 Press and hold .
- 2 Turn the volume knob to select [BLUETOOTH], then press the knob.
- 3 Turn the volume knob to select an item (see the following table), then press the knob.
- 4 Repeat step 3 until the desired item is selected/activated or follow the instructions stated on the selected item.
- 5 Press  to exit.

To return to the previous setting item, press .

Default: **XX**

PHONE*1	Selects the phone or audio device to connect or disconnect.
AUDIO*1	"X" appears in front of the device name when connected.
APPLICATION*1	Shows the connected phone name using the JVC Smart Music Control*2 app. "X" appears in front of the device name when connected.
DELETE PAIR	<ol style="list-style-type: none">1 Turn the volume knob to select a device to delete, then press the knob.2 Turn the volume knob to select [YES] or [NO], then press the knob.
SET PINCODE (0000)	Changes the PIN code (up to 6 digits). <ol style="list-style-type: none">1 Turn the volume knob to select a number.2 Press  /  to move the entry position. Repeat steps 1 and 2 until you finish entering the PIN code.3 Press the volume knob to confirm.
AUTO CNCT	ON: The unit automatically reconnect when the last connected Bluetooth device is within range. ; OFF: Cancels.
AUTO PAIR	ON: The unit automatically pair supported Bluetooth device (iPhone/ iPod touch/ Android device) when it is connected through USB input terminal. Depending on the operating system of the connected device, this function may not work. ; OFF: Cancels.
INITIALIZE	YES: Initializes all the Bluetooth settings (including stored pairing, phonebook, and etc.). ; NO: Cancels.
INFORMATION	MY BT NAME: Displays the unit name (JVC UNIT). ; MY ADDRESS: Shows address of this unit.

*1 You can only connect a maximum of two Bluetooth phones and one Bluetooth audio device at any time.


*2 JVC Smart Music Control is designed to view JVC car receiver status and perform simple control operations on Android smart phones.

For JVC Smart Music Control operations, visit JVC website: <<http://www.jvc.net/cs/car/>>.

Bluetooth compatibility check mode

You can check the connectivity of the supported profile between the Bluetooth device and the unit.

- Make sure there is no Bluetooth device paired.

- 1 Press and hold .
"BLUETOOTH" ↔ "CHECK MODE" appears. "SEARCH NOW USING PHONE" → "PIN IS 0000" scrolls on the display.
- 2 Search and select "JVC UNIT" on the Bluetooth device within 3 minutes.
- 3 Perform (A), (B) or (C) depending on what appears on the display.
(A) "PAIRING" → "XXXXXX" (6-digit passkey): Ensure that the same passkey appears on the unit and Bluetooth device, then operate the Bluetooth device to confirm the passkey.
(B) "PAIRING" → "PIN IS 0000": Enter "0000" on the Bluetooth device.
(C) "PAIRING": Operate the Bluetooth device to confirm pairing.

After pairing is successful, "PAIRING OK" → "[Device Name]" appears and Bluetooth compatibility check starts.

If "CONNECT NOW USING PHONE" appears, operate the Bluetooth device to allow phonebook access to continue. "TESTING" flashes on the display.

The connectivity result flashes on the display.

"PAIRING OK" and/or "H.FREE OK"*1 and/or "A.STREAM OK"*2 and/or "PBAP OK"*3 : Compatible

*1 Compatible with Hands-Free Profile (HFP)

*2 Compatible with Advanced Audio Distribution Profile (A2DP)

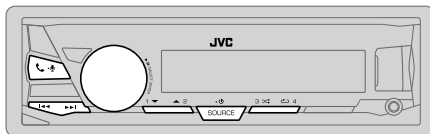
*3 Compatible with Phonebook Access profile (PBAP)

After 30 seconds, "PAIRING DELETED" appears to indicate that pairing has been deleted, and the unit exits check mode.

- To cancel, press and hold **SOURCE** -  to turn off the power, then turn on the power again.

BLUETOOTH®

BLUETOOTH — Audio



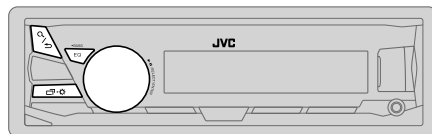
Audio player via Bluetooth

- 1 Press **SOURCE** repeatedly to select BT AUDIO (or press **SOURCE** on RM-RK52).
- 2 Operate the Bluetooth audio player to start playback.

To	On the faceplate	On the remote control
Playback / pause	Press the volume knob.	Press .
Select group or folder	Press 2 / 1 .	Press / .
Reverse / Forward skip	Press / .	Press / .
Reverse / Fast-forward	Press and hold / .	Press and hold / .
Repeat play	Press 4 repeatedly. TRACK RPT, ALL RPT, RPT OFF	(Not available)
Random play	Press 3 repeatedly. GROUP RND, ALL RND, RND OFF	(Not available)
Select a file from a folder/list	Refer to “Select a file from a folder/list” on page 8.	(Not available)

Operations and display indications may differ according to their availability on the connected device.

AUDIO SETTINGS



Select a preset equalizer

Press **EQ-BASS** repeatedly.

(or)

Press **EQ-BASS**, then turn the volume knob within 5 seconds.

Preset equalizer:

FLAT (default)/ HARD ROCK / POP / HIP HOP / R&B / JAZZ / CLASSICAL / USER

Store your own sound settings

- 1 Press and hold **EQ-BASS** to enter EASY EQ setting.
 - 2 Turn the volume knob to select an item, then press the knob. Refer to [EASY EQ] for setting (➔ 15) and the result is stored to [USER].
- To return to the previous setting item, press / .
 - To exit, press **EQ-BASS**.

Other settings

- 1 Press and hold .
- 2 Turn the volume knob to select an item (➔ 15), then press the knob.
- 3 Repeat step 2 until the desired item is selected/activated or follow the instructions stated on the selected item.
- 4 Press to exit.

To return to the previous setting item, press / .

AUDIO SETTINGS

Default: **XX**

EQ SETTING	
EQ PRESET	Select a preset equalizer suitable to the music genre. (Select [USER] to use the settings made in [EASY EQ] or [PRO EQ].) FLAT / HARD ROCK / POP / HIP HOP / R&B / JAZZ / CLASSICAL / USER
EASY EQ	Adjust your own sound settings. The settings are stored to [USER]. • The settings made may affect the current settings of [PRO EQ]. SUB.W SP*1*2: 00 to +06 (Default: 03) SUB.W*1*3: -50 to +10 00 BASS LVL: -09 to +09 00 MID LVL: -09 to +09 00 TRE LVL: -09 to +09 00
PRO EQ	Adjust your own sound settings. The settings are stored to [USER]. • The settings made may affect the current settings of [EASY EQ].
62.5HZ	
LVL -09 to +09 (00): Adjusts the level to memorize for each source. (Before making an adjustment, select the source you want to adjust.)	
BASS EXT ON: Turns on the extended bass. ; BASS EXT OFF: Cancels.	
100HZ / 160HZ / 250HZ / 400HZ / 630HZ / 1KHZ / 1.6KHZ / 2.5KHZ / 4KHZ / 6.3KHZ / 10KHZ / 16kHz	
LVL -09 to +09 (00): (Refer above)	
Q FACTOR	
Q 1.35 / Q 1.50 / Q 2.00: Adjust the quality factor.	
AUDIO	
BASS BOOST	+01 — +05: Selects your preferred bass boost level. ; OFF: Cancels.
LOUD	01 / 02: Boosts low or high frequencies to produce a well-balanced sound at low volume. ; OFF: Cancels.

SUB.W LEVEL*1	SPK-OUT*2 (Not applicable when 3-way crossover is selected.) 00 to +06 (+03): Adjusts the output level of the subwoofer connected via speaker lead. (➡ 26, 27)
	PRE-OUT*3 -50 to +10 (00): Adjusts the output level of the subwoofer connected to the lineout terminals (SW or REAR/SW) through an external amplifier. (➡ 26, 27)
SUB.W*3	ON / OFF: Turns on or off the subwoofer output.
FADER	(Not applicable when 3-way crossover is selected.) R15 — F15 (00): Adjusts the front and rear speaker output balance.
BALANCE*4	L15 — R15 (00): Adjusts the left and right speaker output balance.
VOL ADJUST	-15 — +06 (00): Preset the initial volume level of each source (compared to the FM volume level). Before adjustment, select the source you want to adjust.
AMP GAIN	LOW POWER: Limits the maximum volume level to 25. (Select if the maximum power of each speaker is less than 50 W to prevent damaging the speakers.) ; HIGH POWER: The maximum volume level is 35.
SPK/PRE OUT	(Not applicable when 3-way crossover is selected.) Depending on the speaker connection method, select the appropriate setting to get the desired output. (➡ 16, Speaker output settings)
SPK SIZE	Depending on the crossover type you have selected (see [X ' OVER TYPE] below), 2-way crossover or 3-way crossover setting items will be shown. (➡ 17, Crossover settings)
X ' OVER	By default, 2-way crossover type is selected.

*1 Displayed only when [SUB.W] is set to [ON].

*2 For 2-way crossover: Displayed only when [SPK/PRE OUT] is set to [SUB.W/SUB.W]. (➡ 16)

*3 For 2-way crossover: Displayed only when [SPK/PRE OUT] is set to [REAR/SUB.W] or [SUB.W/SUB.W]. (➡ 16)

*4 This adjustment will not affect the subwoofer output.

AUDIO SETTINGS

X ' OVER TYPE	Caution: Adjust the volume before changing the X ' OVER TYPE to avoid the sudden increase or decrease of the output level.
X ' OVER 2-WAY	(Displayed only when [X ' OVER 3-WAY] is selected) YES: Selects two way crossover type. ; NO: Cancels.
X ' OVER 3-WAY	(Displayed only when [X ' OVER 2-WAY] is selected) YES: Selects three way crossover type. ; NO: Cancels.
SND EFFECT	
ENHANCE	(Not applicable for TUNER source.) SML/ MED/ LRG: Virtually enhances the sound space. ; OFF: Cancels.
RESPONSE	LV1/ LV2/ LV3: Virtually makes the sound more realistic. ; OFF: Cancels.
SOUND LIFT	LV1/ LV2/ LV3: Virtually adjust the sound position heard from the speakers. ; OFF: Cancels.
VOL LINK EQ	ON: Boosts the frequency to reduce the noise heard from outside the car or running noise of the tyres. ; OFF: Cancels.
K2	(Not applicable for TUNER and AUX source.) ON: Improve the sound quality of compressed music. ; OFF: Cancels.

Speaker output settings

(Only for X ' OVER 2-WAY)

Select the output setting for the speakers [SPK/PRE OUT], base on the speaker connection method.

Connection via lineout terminals

For connections through an external amplifier. (➡ 26, 27)

(For KD-X330BT)

Setting on [SPK/PRE OUT]	Audio signal through lineout terminal	
	FRONT	REAR/SW
REAR/REAR	Front speakers output	Rear speakers output
REAR/SUB.W (default)	Front speakers output	Subwoofer output
SUB.W/SUB.W	Front speakers output	Subwoofer output

(For KD-X33MBT)

Setting on [SPK/PRE OUT]	Audio signal through lineout terminal		
	FRONT	REAR	SW
REAR/REAR (default)	Front speakers output	Rear speakers output	Subwoofer output
REAR/SUB.W	(Not available)	(Not available)	(Not available)
SUB.W/SUB.W	Front speakers output	L (left): Subwoofer output R (right): (Mute)	Subwoofer output

Connection via speaker leads

For connections without using an external amplifier. However, with this settings you can also enjoy the subwoofer output. (➡ 26, 27)

Setting on [SPK/PRE OUT]	Audio signal through rear speaker lead	
	L (left)	R (right)
REAR/REAR	Rear speakers output	Rear speakers output
REAR/SUB.W	Rear speakers output	Rear speakers output
SUB.W/SUB.W	Subwoofer output	(Mute)

If [SUB.W/SUB.W] is selected:

- [FRQ 120HZ] is selected in [SUB.W LPF] and [THROUGH] is not available.
- [R02] is selected in [FADER] and selectable range is [R15] to [00].

AUDIO SETTINGS

Crossover settings

Below are the available setting items for 2-way crossover and 3-way crossover.

▲ Caution

Select a crossover type according to how the speakers are connected. (➡ 26, 27)

If you select a wrong type:

- The speakers may damage.
- The output sound level may be extremely high or low.

SPK SIZE (speaker size)

Selects according to the connected speaker size for optimum performance.

- The frequency and slope settings are automatically set for the crossover of the selected speaker.
- If [NONE] is selected for [TWEETER] of [FRONT], [REAR] and [SUBWOOFER] for [SPK SIZE], the [X'OVER] setting of the selected speaker is not available.

X'OVER (crossover)

[FRQ]/[HPF FRQ]/[LPF FRQ]:

Adjusts the crossover frequency for the selected speakers (high pass filter or low pass filter).

- If [THROUGH] is selected, all signals are sent to the selected speakers.

[SLOPE]/[HPF SLOPE]/[LPF SLOPE]:

Adjusts the crossover slope.

- Selectable only if a setting other than [THROUGH] is selected for the crossover frequency.

[PHASE]:

Selects the phase of the speaker output to be in line with the other speaker output.

[GAIN LEFT]/[GAIN RIGHT]/[GAIN]:

Adjusts the output volume of the selected speaker.

2-way crossover setting items

SPK SIZE

FRONT	SIZE	8CM/ 10CM/ 12CM/ 13CM/ 16CM/ 17CM/ 18CM/ 4×6"/ 5×7"/ 6×8"/ 6×9"/ 7×10"
	TWEETER	SML/ MID/ LRG/ NONE (not connected)
REAR*1		8CM/ 10CM/ 12CM/ 13CM/ 16CM/ 17CM/ 18CM/ 4×6"/ 5×7"/ 6×8"/ 6×9"/ 7×10"/ NONE (not connected)
SUBWOOFER*2*3		16CM/ 20CM/ 25CM/ 30CM/ 38CM OVER/ NONE (not connected)

X'OVER

TWEETER	FRQ	1KHZ/ 1.6KHZ/ 2.5KHZ/ 4KHZ/ 5KHZ/ 6.3KHZ/ 8KHZ/ 10KHZ/ 12.5KHZ
	GAIN LEFT	-08DB to 00DB
	GAIN RIGHT	-08DB to 00DB
FRONT HPF	FRQ	30HZ/ 40HZ/ 50HZ/ 60HZ/ 70HZ/ 80HZ/ 90HZ/ 100HZ/ 120HZ/ 150HZ/ 180HZ/ 220HZ/ 250HZ/ THROUGH
	SLOPE	-06DB/ -12DB/ -18DB/ -24DB
	GAIN	-08DB to 00DB
REAR HPF*1	FRQ	30HZ/ 40HZ/ 50HZ/ 60HZ/ 70HZ/ 80HZ/ 90HZ/ 100HZ/ 120HZ/ 150HZ/ 180HZ/ 220HZ/ 250HZ/ THROUGH
	SLOPE	-06DB/ -12DB/ -18DB/ -24DB
	GAIN	-08DB to 00DB
SUB.W LPF*2*3	FRQ	30HZ/ 40HZ/ 50HZ/ 60HZ/ 70HZ/ 80HZ/ 90HZ/ 100HZ/ 120HZ/ 150HZ/ 180HZ/ 220HZ/ 250HZ/ THROUGH
	SLOPE	-06DB/ -12DB/ -18DB/ -24DB
	PHASE	REVERSE (180°)/ NORMAL (0°)
	GAIN	-08DB to 00DB

*1 Displayed only when [SPK/PRE OUT] is set to [REAR/REAR] or [REAR/SUB.W]. (➡ 16)

*2 For KD-X330BT: Displayed only when [SPK/PRE OUT] is set to [REAR/SUB.W] or [SUB.W/SUB.W]. (➡ 16)

*3 Displayed only when [SUB.W] is set to [ON]. (➡ 15)

AUDIO SETTINGS

3-way crossover setting items

SPK SIZE

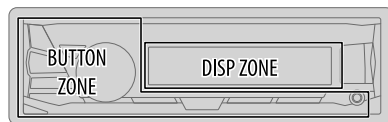
TWEETER	SML/ MID/ LRG
MID RANGE	8CM/ 10CM/ 12CM/ 13CM/ <u>16CM</u> / 17CM/ 18CM/ 4×6"/ 5×7"/ 6×8"/ 6×9"
WOOFER*	16CM/ 20CM/ <u>25CM</u> / 30CM/ 38CM OVER/ NONE (not connected)

X'OVER

TWEETER	HPF FRQ	1KHZ/ 1.6KHZ/ 2.5KHZ/ <u>4KHZ</u> / 5KHZ/ 6.3KHZ/ 8KHZ/ 10KHZ/ 12.5KHZ
	SLOPE	−06DB/ <u>−12DB</u>
	PHASE	REVERSE (180°)/ <u>NORMAL</u> (0°)
	GAIN	−08DB to <u>00DB</u>
MID RANGE	HPF FRQ	30HZ/ 40HZ/ 50HZ/ 60HZ/ 70HZ/ 80HZ/ 90HZ/ 100HZ/ <u>120HZ</u> / 150HZ/ 180HZ/ 220HZ/ 250HZ/ THROUGH
	HPF SLOPE	−06DB/ <u>−12DB</u>
	LPF FRQ	1KHZ/ 1.6KHZ/ 2.5KHZ/ <u>4KHZ</u> / 5KHZ/ 6.3KHZ/ 8KHZ/ 10KHZ/ 12.5KHZ/ THROUGH
	LPF SLOPE	−06DB/ <u>−12DB</u>
	PHASE	REVERSE (180°)/ <u>NORMAL</u> (0°)
	GAIN	−08DB to <u>00DB</u>
WOOFER*	LPF FRQ	30HZ/ 40HZ/ 50HZ/ 60HZ/ <u>70HZ</u> / 80HZ/ 90HZ/ 100HZ/ 120HZ/ 150HZ/ 180HZ/ 220HZ/ 250HZ/ THROUGH
	SLOPE	−06DB/ <u>−12DB</u>
	PHASE	REVERSE (180°)/ <u>NORMAL</u> (0°)
	GAIN	−08DB to <u>00DB</u>

* Displayed only when [SUB.W] is set to [ON]. (→ 15)

DISPLAY SETTINGS



- 1 Press and hold .
- 2 Turn the volume knob to select an item (see the following table), then press the knob.
- 3 Repeat step 2 until the desired item is selected/activated or follow the instructions stated on the selected item.
- 4 Press to exit.

To return to the previous setting item, press / .

Default: **XX**

DISPLAY

DIMMER

Dim the display and buttons illumination.

OFF: Dimmer is turned off.

ON: Dimmer is turned on. Brightness changes to [NIGHT] setting.

(→ 19, [BRIGHTNESS])

DIMMER TIME: Set the dimmer on and off time.

1 Turn the volume knob to adjust the [ON] time, then press the knob.

2 Turn the volume knob to adjust the [OFF] time, then press the knob.

(Default: [ON]: 18:00 or 6:00 PM

[OFF]: 6:00 or 6:00 AM)

AUTO: Dimmer turns on and off automatically when you turn off or on the car headlights.*1

DISPLAY SETTINGS

BRIGHTNESS	Set the button and display brightness for day and night separately.
	1 DAY / NIGHT: Select day or night.
	2 Select a zone. (➡ 18)
SCROLL *2	3 Set the brightness level (00 to 31). (Default: BUTTON ZONE: DAY: 25 ; NIGHT: 09 DISP ZONE: DAY: 31 ; NIGHT: 12)
	ONCE: Scrolls the display information once. ; AUTO: Repeats scrolling at 5-second intervals. ; OFF: Cancels.

*1 The illumination control wire connection is required. (➡ 26, 27)

*2 Some characters or symbols will not be shown correctly (or will be blanked).

REFERENCES

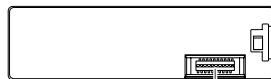
■ Maintenance

Cleaning the unit

Wipe off dirt on the faceplate with a dry silicone or soft cloth.

Cleaning the connector

Detach the faceplate and clean the connector gently with a cotton swab, being careful not to damage the connector.



Connector (on the reverse side of the faceplate)

■ More information

Visit also the following website <<http://www.jvc.net/cs/car/>> for:

- Latest firmware updates and latest compatible item list
- Android™ application JVC MUSIC PLAY
- Any other latest information

General

- Detailed information and notes about the playable audio files are stated in an online manual on the following website <<http://www.jvc.net/cs/car/>>.

Playable files

- Playable audio file: MP3 (.mp3), WMA (.wma), AAC (.aac), WAV (.wav), FLAC (.flac)
- Playable USB device file system: FAT12, FAT16, FAT32

Even when audio files comply with the standards listed above, playback may be impossible depending on the types or conditions of media or device.

The AAC (.m4a) file in a USB device encoded by iTunes cannot be played on this unit.

About USB devices

- This unit can play MP3/WMA/AAC/WAV/FLAC files stored on a USB mass storage class device.
- You cannot connect a USB device via a USB hub.
- Connecting a cable whose total length is longer than 5 m may result in abnormal playback.
- This unit cannot recognize a USB device whose rating is other than 5 V and exceeds 1.5 A.

REFERENCES

About iPod/iPhone

Made for

- iPod touch (2nd, 3rd, 4th, and 5th generation)
- iPod classic
- iPod nano (3rd, 4th, 5th, 6th, and 7th generation)
- iPhone 3G, 3GS, 4, 4S, 5, 5S, 5C, 6, 6 Plus
- It is not possible to browse video files on the "Videos" menu in [HEAD MODE].
- The song order displayed on the selection menu of this unit may differ from that of the iPod/iPhone.
- Depending on the version of the operating system of the iPod/iPhone, some functions may not operate on this unit.

About Android device

- This unit supports Android OS 4.1 and above.
- Some Android devices (with OS 4.1 and above) may not fully support Android Open Accessory (AOA) 2.0.
- If the Android device supports both mass storage class device and AOA 2.0, this unit always playback via AOA 2.0 as priority.

About Bluetooth

- Depending on the Bluetooth version of the device, some Bluetooth devices may not be able to connect to this unit.
- This unit may not work with some Bluetooth devices.
- Signal conditions vary, depending on the surroundings.


Change the display information

Each time you press  , the display information changes.

- If the information is unavailable or not recorded, "NO TEXT", "NO NAME", or other information (eg. station name) appears.

FM or AM	Frequency ↔ Day/Clock
	(For FM Radio Data System stations only) Station name (PS) → Frequency → Program type (PTY) → Radio text+ → Day/Clock → (back to the beginning)
USB	(For MP3/WMA/AAC/WAV/FLAC files) Playing time → Day/Clock → Album title/Artist → Track title → Folder/file name → (back to the beginning)
USB-IPOD or ANDROID	Playing time → Day/Clock → Album title/Artist → Track title → (back to the beginning)
AUX	AUX → Day/Clock → (back to the beginning)
BT AUDIO	Playing time → Day/Clock → Album title/Artist → Track title → (back to the beginning)

Available Cyrillic letters

 Available characters

 Display indications

А	Б	В	Г	Д	Е	Ж	З	И	Й	К	Л	М	Н	О	П	Р
А	Б	В	Г	Д	Е	Ж	З	И	Й	К	Л	М	Н	О	П	Р
С	Т	У	Ф	Х	Ц	Ч	Ш	Щ	Ъ	Ы	Ь	Э	Ю	Я	Ё	
С	Т	У	Ф	Х	Ц	Ч	Ш	Щ	Ъ	Ы	Ь	Э	Ю	Я	Ё	

TROUBLESHOOTING

Symptom	Remedy
General	Sound cannot be heard. <ul style="list-style-type: none"> Adjust the volume to the optimum level. Check the cords and connections.
	"MISWIRING CHECK WIRING THEN PWR ON" appears. <ul style="list-style-type: none"> Turn the power off, then check to be sure the terminals of the speaker wires are insulated properly. Turn the power on again.
	"PROTECTING SEND SERVICE" appears. <ul style="list-style-type: none"> Send the unit to the nearest service center.
	Source cannot be selected. <ul style="list-style-type: none"> Check the [SRC SELECT] setting. (➡ 4)
Radio	<ul style="list-style-type: none"> Radio reception is poor. Static noise while listening to the radio. Connect the antenna firmly.
	Playback order is not as intended. <ul style="list-style-type: none"> The playback order is determined by the file name.
	Elapsed playing time is not correct. <ul style="list-style-type: none"> This depends on the recording process earlier.
	"NOT SUPPORT" appears and file skips. <ul style="list-style-type: none"> Check whether the file is a playable format. (➡ 19)
USB / iPod	"READING" keeps flashing. <ul style="list-style-type: none"> Do not use too many hierarchical levels and folders. Reattach the USB device.
	"CANNOT PLAY" flashes and/or connected device cannot be detected. <ul style="list-style-type: none"> Check whether the connected device is compatible with this unit and ensure the files are in supported formats. (➡ 19) Reattach the device.
	The iPod/iPhone does not turn on or does not work. <ul style="list-style-type: none"> Check the connection between this unit and iPod/iPhone. Detach and reset the iPod/iPhone using hard reset.
	Correct characters are not displayed. <ul style="list-style-type: none"> This unit can only display uppercase letters, numbers, and a limited number of symbols. Depending on the display language you have selected (➡ 4), some characters may not be displayed correctly.

Symptom	Remedy
ANDROID	<ul style="list-style-type: none"> Sound cannot be heard during playback. Sound output only from the Android device. <ul style="list-style-type: none"> Reconnect the Android device. If in [AUDIO MODE], launch any media player application on the Android device and start playback. If in [AUDIO MODE], relaunch the current media player application or use another media player application. Restart the Android device. If this does not solve the problem, the connected Android device is unable to route the audio signal to unit. (➡ 20)
	Cannot playback at [AUTO MODE]. <ul style="list-style-type: none"> Make sure JVC MUSIC PLAY APP is installed on the Android device. (➡ 7) Reconnect the Android device and select the appropriate control mode. (➡ 8) If this does not solve the problem, the connected Android device does not support [AUTO MODE]. (➡ 20)
	"NO DEVICE" or "READING" keeps flashing. <ul style="list-style-type: none"> Switch off the developer options on the Android device. Reconnect the Android device. If this does not solve the problem, the connected Android device does not support [AUTO MODE]. (➡ 20)
	Playback is intermittent or sound skips. <ul style="list-style-type: none"> Turn off the power saving mode on the Android device.
	"CANNOT PLAY" <ul style="list-style-type: none"> Make sure Android device contains playable audio files. Reconnect the Android device. Restart the Android device.

TROUBLESHOOTING

Symptom	Remedy
No Bluetooth device is detected.	<ul style="list-style-type: none"> Search from the Bluetooth device again. Reset the unit. (➔ 3)
Pairing cannot be made.	<ul style="list-style-type: none"> Make sure you have entered the same PIN code to both the unit and Bluetooth device. Delete pairing information from both the unit and the Bluetooth device, then perform pairing again. (➔ 9)
Echo or noise occurs.	<ul style="list-style-type: none"> Adjust the microphone unit's position. (➔ 9) Check the [ECHO CANCEL] setting. (➔ 11)
Phone sound quality is poor.	<ul style="list-style-type: none"> Reduce the distance between the unit and the Bluetooth device. Move the car to a place where you can get a better signal reception.
Sound is being interrupted or skipped during playback of a Bluetooth audio player.	<ul style="list-style-type: none"> Reduce the distance between the unit and the Bluetooth audio player. Turn off, then turn on the unit and try to connect again. Other Bluetooth devices might be trying to connect to the unit.
The connected Bluetooth audio player cannot be controlled.	<ul style="list-style-type: none"> Check whether the connected Bluetooth audio player supports Audio/Video Remote Control Profile (AVRCP). (Refer to the instructions of your audio player.) Disconnect and connect the Bluetooth player again.

Bluetooth®

Symptom	Remedy
"PAIRING FULL"	The number of registered devices has reached its limit. Retry after deleting an unnecessary device. (➔ 13, DELETE PAIR)
"PLEASE WAIT"	The unit is preparing to use the Bluetooth function. If the message does not disappear, turn off and turn on the unit, then connect the device again.
"BT DEVICE NOT FOUND"	The unit failed to search for the registered Bluetooth devices during [AUTO CNNECT]. Turn on Bluetooth from your device and connect manually. (➔ 13)
"NOT SUPPORT"	The connected phone does not support Voice Recognition feature.
"ERROR"	Try the operation again. If "ERROR" appears again, check if the device supports the function you have tried.
"H/W ERROR"	Reset the unit and try the operation again. If "H/W ERROR" appears again, consult your nearest service center.

Bluetooth®

If you still have troubles, reset the unit. (➔ 3)

SPECIFICATIONS

Tuner	FM	Frequency Range	87.5 MHz — 108.0 MHz (50 kHz step)
		Usable Sensitivity (S/N = 26 dB)	0.71 μ V/75 Ω
		Quieting Sensitivity (DIN S/N = 46 dB)	2.0 μ V/75 Ω
		Frequency Response (± 3 dB)	30 Hz — 15 kHz
		Signal-to-Noise Ratio (MONO)	64 dB
		Stereo Separation (1 kHz)	40 dB
MW	Frequency Range	531 kHz — 1 611 kHz (9 kHz step)	
	Usable Sensitivity (S/N = 20 dB)	28.2 μ V	
LW	Frequency Range	153 kHz — 279 kHz (9 kHz step)	
	Usable Sensitivity (S/N = 20 dB)	50 μ V	

USB	USB Standard	USB 1.1, USB 2.0 (Full speed)
	Compatible Devices	Mass storage class
	File System	FAT12/ 16/ 32
	Maximum Supply Current	DC 5 V $\overline{\text{max}}$ 1.5 A
	Digital Filter (D/A) Converter	24 Bit
	Frequency Response (± 1 dB)	20 Hz — 20 kHz
	Signal-to-Noise Ratio (1 kHz)	105 dB
	Dynamic Range	90 dB
	Channel Separation	85 dB
	MP3 Decode	Compliant with MPEG-1/2 Audio Layer-3
	WMA Decode	Compliant with Windows Media Audio
	AAC Decode	AAC-LC “.aac” files
	WAV Decode	RIFF waveform Audio Format (Linear PCM only)
	FLAC Decode	FLAC files

Auxiliary	Frequency Response (± 3 dB)	20 Hz — 20 kHz
	Input Maximum Voltage	1 000 mV
	Input Impedance	30 k Ω
Bluetooth	Version	Bluetooth Ver.2.1+EDR/ Bluetooth 3.0
	Frequency Range	2.402 GHz — 2.480 GHz
	Output Power	+4 dBm (MAX), 0 dBm (AVE) Power Class 2
	Maximum Communication Range	Line of sight approx. 10 m (32.8 ft)
	Pairing	SSP (Secure Simple Pairing)
Bluetooth	Profile	HFP1.6 (Hands-Free Profile) A2DP (Advanced Audio Distribution Profile) AVRCP1.5 (Audio/Video Remote Control Profile) PBAP (Phonebook Access Profile) SPP (Serial Port Profile)

SPECIFICATIONS

Audio	Maximum Output Power	50 W × 4 or 50 W × 2 + 50 W × 1 (Subwoofer = 4 Ω)
	Full Bandwidth Power (at less than 1 % THD)	22 W × 4
	Speaker Impedance	4 Ω — 8 Ω
	Preout Level/Load (USB)	4 000 mV/10 kΩ load
	Preout Impedance	≤ 600 Ω
General	Operating Voltage (10.5 V — 16 V allowable)	14.4 V
	Maximum Current Consumption	10 A
	Operating Temperature Range	−10°C — +60°C
	Installation Size (W × H × D)	182 mm × 53 mm × 107 mm
	Weight	0.6 kg

Subject to change without notice.

INSTALLATION / CONNECTION

▲ Warning

- The unit can only be used with a 12 V DC power supply, negative ground.
- Disconnect the battery's negative terminal before wiring and mounting.
- Do not connect Battery wire (yellow) and Ignition wire (red) to the car chassis or Ground wire (black) to prevent a short circuit.
- Insulate unconnected wires with vinyl tape to prevent a short circuit.
- Be sure to ground this unit to the car's chassis again after installation.

▲ Caution

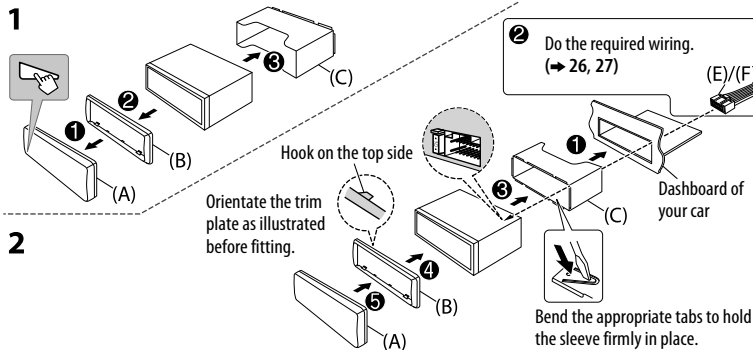
- For safety's sake, leave wiring and mounting to professionals. Consult the car audio dealer.
- Install this unit in the console of your vehicle. Do not touch the metal parts of this unit during and shortly after use of the unit. Metal parts such as the heat sink and enclosure become hot.
- Do not connect the ⊖ wires of speakers to the car chassis or Ground wire (black), or connect them in parallel.
- Connect speakers with a maximum power of more than 50 W. If the maximum power of the speakers is lower than 50 W, change the [AMP GAIN] setting to avoid damaging the speakers. (➡ 15)
- Mount the unit at an angle of less than 30°.
- If your vehicle wiring harness does not have the ignition terminal, connect Ignition wire (red) to the terminal on the vehicle's fuse box which provides 12 V DC power supply and is turned on and off by the ignition key.
- Keep all cables away from heat dissipate metal parts.
- After the unit is installed, check whether the brake lamps, blinkers, wipers, etc. on the car are working properly.
- If the fuse blows, first make sure the wires are not touching car's chassis, then replace the old fuse with one that has the same rating.

Basic procedure

- 1 Remove the key from the ignition switch, then disconnect the ⊖ terminal of the car battery.
- 2 Connect the wires properly.
See Wiring connection. (➡ 26, 27)
- 3 Install the unit to your car.
See Installing the unit (in-dash mounting).
- 4 Connect the ⊖ terminal of the car battery.
- 5 Press **SOURCE**-⏻ to turn on the power.
- 6 Detach the faceplate and reset the unit within 5 seconds. (➡ 3)

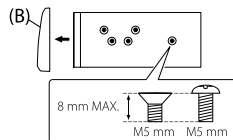
INSTALLATION / CONNECTION

Installing the unit (in-dash mounting)

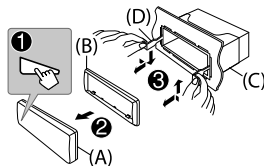


When installing without the mounting sleeve

- 1 Remove the mounting sleeve and trim plate from the unit.
 - 2 Align the holes in the unit (on both sides) with the vehicle mounting bracket and secure the unit with screws (commercially available).
- ⚠ Use only the specified screws. Using wrong screws might damage the unit.

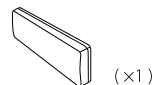


How to remove the unit

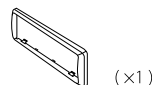


Part list for installation

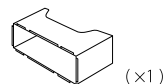
(A) Faceplate



(B) Trim plate



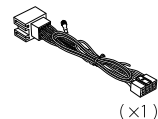
(C) Mounting sleeve



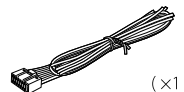
(D) Extraction key



(E) Wiring harness (for KD-X330BT)

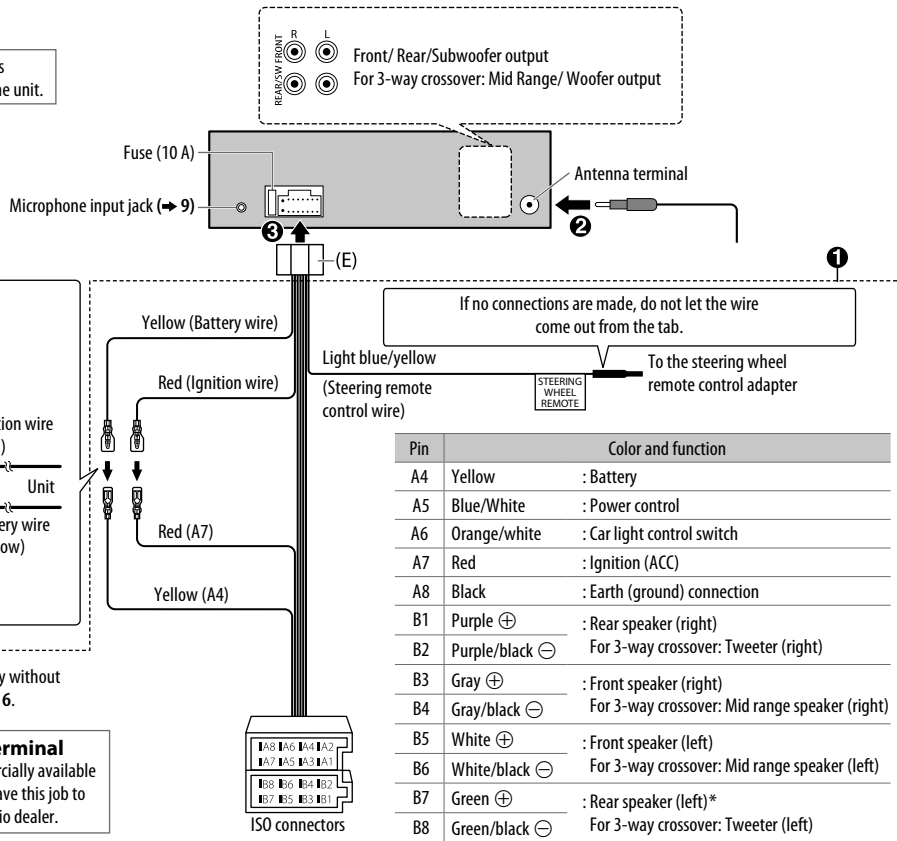


(F) Wiring harness (for KD-X33MBT)



Wiring connection (for KD-X330BT)

When connecting to an external amplifier, connect its ground wire to the car's chassis to avoid damaging the unit.



* You can also connect a subwoofer speaker directly without an external subwoofer amplifier. For setting, ➔ 16.

If your car does not have an ISO terminal

We recommend installing the unit with a commercially available custom wiring harness specific for your car and leave this job to professionals for your safety. Consult your car audio dealer.

Wiring connection (for KD-X33MBT)

